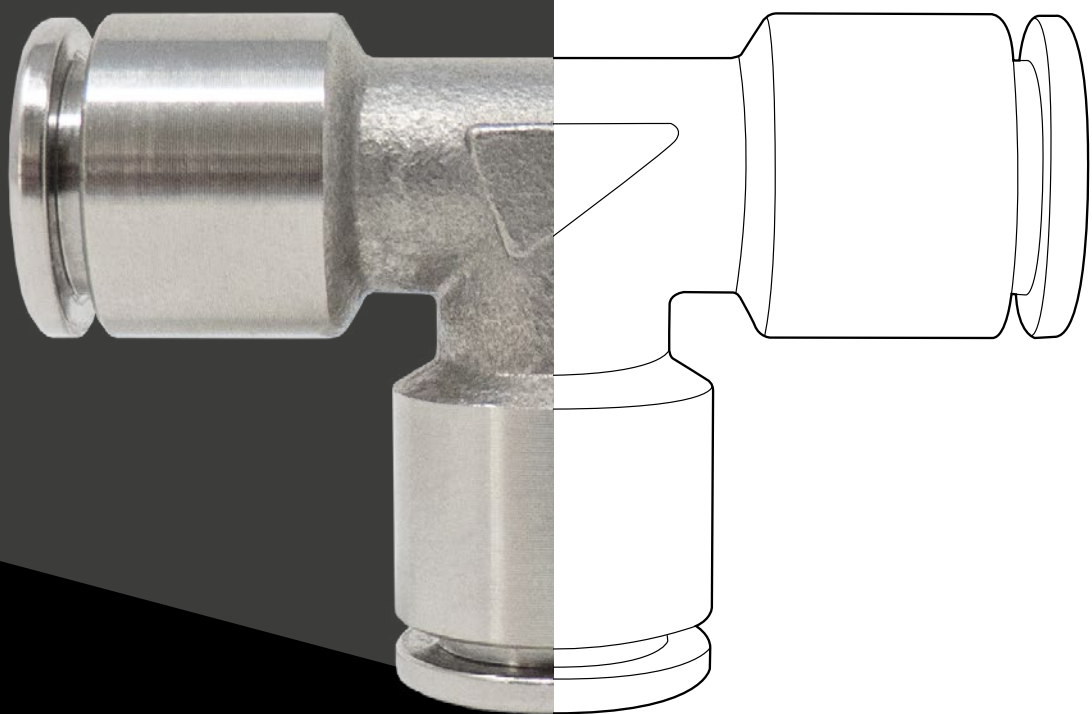


XVR SERIES INOX AISI 316L

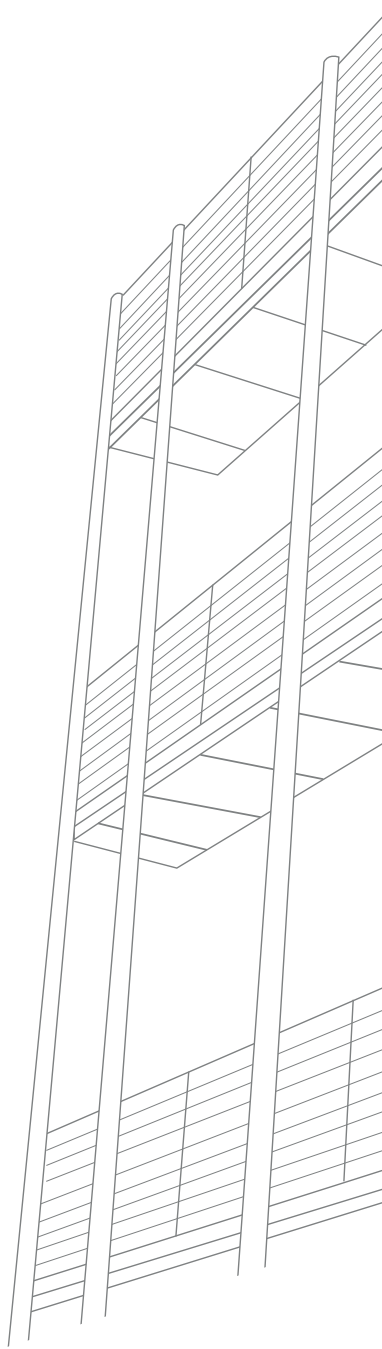


 **TierreFittings**[®]



 **TierreGroup**[®]





 **TierreGroup**®

 **TierreFittings**®

 **F-Line.PRO**

 **NET.Fit**®

 **INOX.Fit**®



XVR SERIES INOX AISI 316L



PLUS

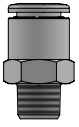
Suitable to be **USED IN AGGRESSIVE ENVIRONMENTS** and **IN CRITICAL CONDITIONS**

Suitable for **PERMANENT FOOD CONTACT APPLICATIONS**

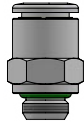
OPTIMIZED DESIGN with **COMPACT DIMENSIONS**

TAILOR MADE PRODUCTS ON SPECIFIC CUSTOMERS NEEDS





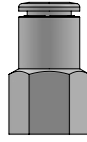
p. 8 / **XVRC-R**



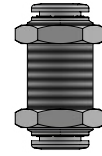
p. 8 / **XVRC-G**



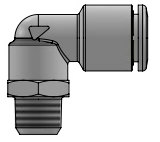
p. 8 / **XVROC-G**



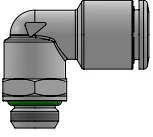
p. 9 / **XVRCF-G**



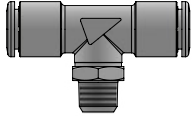
p. 9 / **XVRMM**



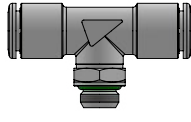
p. 9 / **XVRL-R**



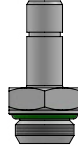
p. 10 / **XVRL-G**



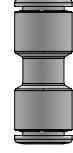
p. 10 / **XVRT-R**



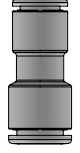
p. 10 / **XVRT-G**



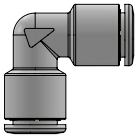
p. 11 / **XVRA-G**



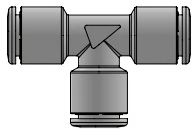
p. 11 / **XVRUC**



p. 11 / **XVRG**



p. 12 / **XVRUL**

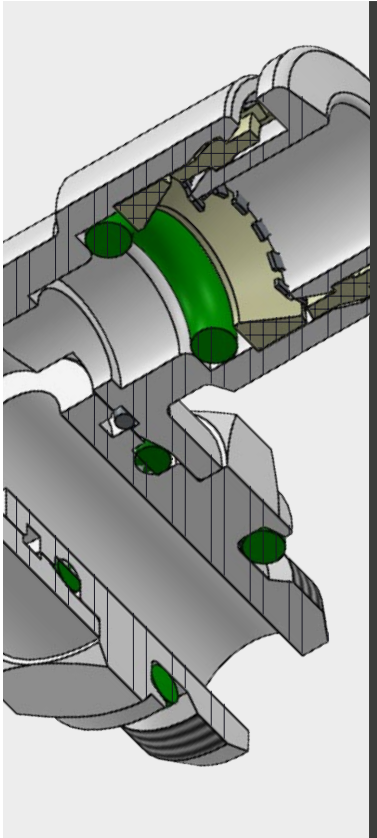


p. 12 / **XVRUT**





p. 12 / **XVRGJ**








 -20°C ÷ 150°C

 **Max. working pressure:**
20 Bar
Negative pressure:
- 0,95 Bar (- 99 Kpa)

 Compressed air, vacuum, water and fluids suitable with the construction materials

 - Taper gas BSPT ISO 7
R1/8" - R1/2"
- Parallel gas BSPP ISO 228
G1/8" - G1/2"
- Metric ISO 262
M5 - M7

 Polyamide PA, Polyethylene PE, FEP, PTFE and Inox tube with groove (see the table)

-  **Body:** Stainless steel AISI 316L
- Collet:** Stainless steel AISI 316L
- Back ring:** PVDF-UHM FDA compliant
- O'ring:** FKM NSF/ANSI 61 certified and FDA compliant
- Seal:** FKM NSF/ANSI 61 certified and FDA compliant
- Lock claw:** Stainless steel AISI 301
- Collar:** PVDF-UHM FDA compliant
- Retaining ring for swivel system:** Stainless steel AISI 302



NSF/ANSI 169



Food contact materials
EC 1935/2004



D.M. 174/2004



ICIM certified product
food contact materials



ICIM certified product
water contact materials

SILICONE FREE

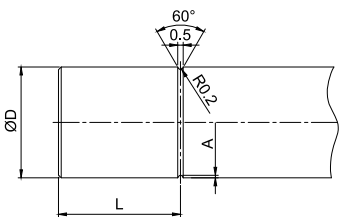


Products in compliance with
the directive 1907/2006



Products in compliance with
the directive EU 2015/863

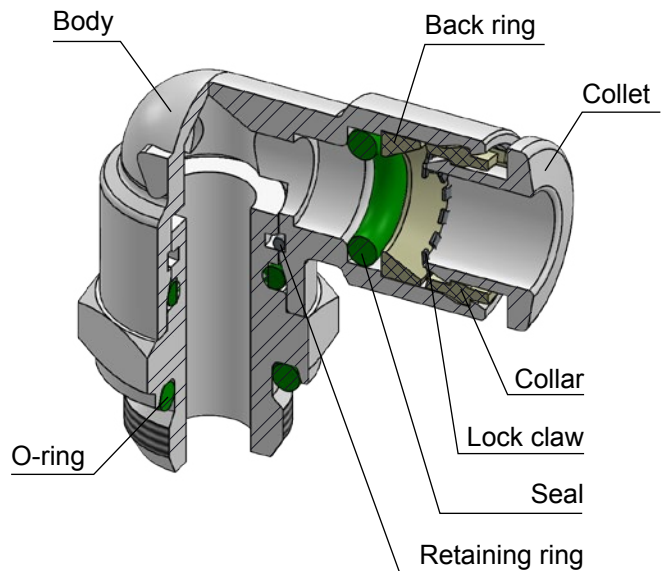
PIPE GROOVE - HARD METALLIC TUBE



When using metallic tubes, please deburr the tubes ends to avoid potential cutting or other damages to the O-ring.

ØD (mm)	L	A
4	7,6	0,23
6	8,0	0,23
8	9,0	0,23
10	11,0	0,23
12	12,7	0,23

CONSTRUCTION DETAILS

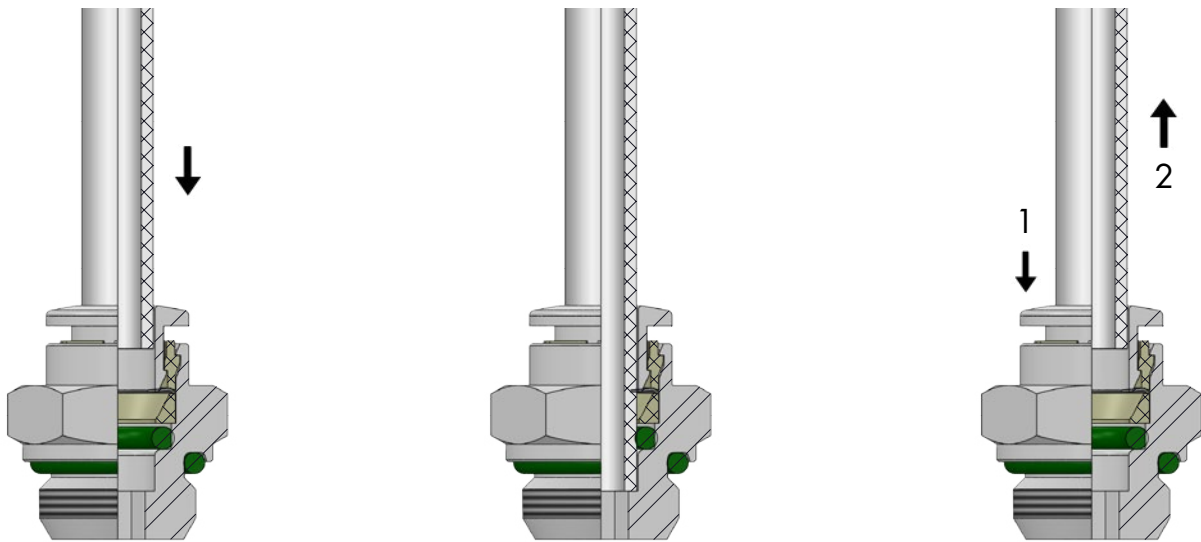


INSERTION OF THE TUBE INTO THE FITTING

- Make sure the tube is fully inserted into the fitting.
- To insert the tube into the fitting cut the tube off square (90°), insert tube up to the fitting end stop, and pull back gently to make sure it is correctly connected.
- If there is any damage or scratches on the tube surface the tube is an oval shape, air leakage and tube release may occur. Check the tube condition carefully.
- The OD of polyurethane tube expands when pressure is applied. Reinsertion into the fitting may not always be possible. Check the OD of the tube and renew it the expansion is out of tolerance.

DISCONNECTION OF THE TUBE FROM THE FITTING

- Make sure the pressure in the system is zero before releasing the tube from the fitting.
- To release the tube, press the release sleeve towards the fitting with one hand (1) and pull the tube away from the fitting with the other hand (2).
- Always remove the section of tube previously inserted into the fitting before reinserting the tube by cutting back the tube. Always use the correct tube cutter in order to cut the tube square and free of damage.



TUBE TOLERANCES

Ø TUBE (mm)	4	6	8	10	12
TOLERANCE (mm)	± 0,1	± 0,1	± 0,1	± 0,15	± 0,15

TUBE INSERTION DEPTH

Ø TUBE (mm)	4	6	8	10	12
TUBE INSERTION LENGTH (mm)	14	15,5	17,5	19	21

TIGHTENING TORQUE
TAPER GAS BSPT ISO 7

THREAD	1/8"	1/4"	3/8"	1/2"
Nm	2,5	3,5	6	12

TIGHTENING TORQUE
PARALLEL GAS BSPP ISO 228 & METRIC ISO 262

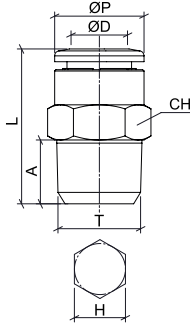
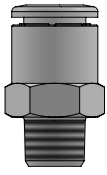
THREAD	M5x0,8	M7x1	1/8"	1/4"	3/8"	1/2"
Nm	0,8	0,8	1,2	1,5	2,5	3,5



XVRC-R



Male connector BSPT thread

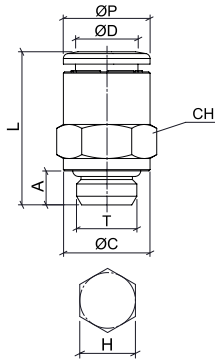
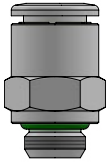


CODE	ØD	T	ØP	A	L	CH	H
XVRC04R01	4	R 1/8"	10	8	18,5	10	3
XVRC04R02		R 1/4"	10	10	20	14	3
XVRC06R01	6	R 1/8"	12	8	21	12	4
XVRC06R02		R 1/4"	12	10	20,5	14	4
XVRC08R01	8	R 1/8"	14	8	26	14	5
XVRC08R02		R 1/4"	14	10	24	14	6
XVRC08R03		R 3/8"	14	11	22	17	6
XVRC10R02	10	R 1/4"	16	10	31	16	7
XVRC10R03		R 3/8"	16	11	26	17	8
XVRC12R02	12	R 1/4"	19	10	33	19	7
XVRC12R03		R 3/8"	19	11	29,5	19	10
XVRC12R04		R 1/2"	19	14	27	22	10

XVRC-G



Male connector BSPP & metric thread

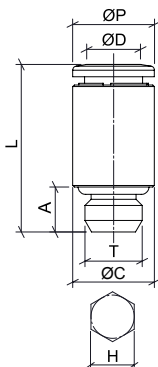


CODE	ØD	T	ØP	ØC	A	L	CH	H
XVRC04M5	4	M5x0,8	10	7	4	19	10	2,5
XVRC04G01		G 1/8"	10	13	5,5	18	13	3
XVRC04G02		G 1/4"	10	16	6,5	18	16	3
XVRC06M5	6	M5x0,8	12	7	5	21	12	2,5
XVRC06G01		G 1/8"	12	13	5,5	19,5	13	4
XVRC06G02		G 1/4"	12	16	6,5	19,5	16	4
XVRC08G01	8	G 1/8"	14	14	5,5	24,5	14	5
XVRC08G02		G 1/4"	14	16	6,5	21,5	16	6
XVRC08G03		G 3/8"	14	20	7,5	21,5	20	6
XVRC10G02	10	G 1/4"	16	16	6,5	27,5	16	7
XVRC10G03		G 3/8"	16	20	7,5	25	20	8
XVRC12G02	12	G 1/4"	19	16	6,5	30	19	7
XVRC12G03		G 3/8"	19	22	7,5	29,5	22	10
XVRC12G04		G 1/2"	19	25	9	28	25	10

XVROC-G



Male connector round body BSPP & metric thread



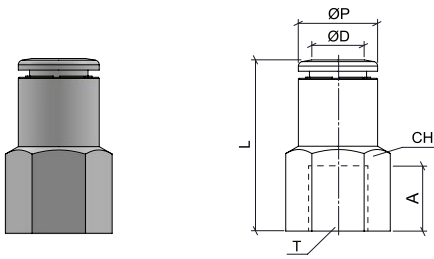
CODE	ØD	T	ØP	ØC	A	L	H
XVROC04M5	4	M5x0,8	10	10	4	19	2,5
XVROC04M7		M7x1	10	10	5,5	20,5	2,5
XVROC06M7C	6	M7x1	10	10	5,5	20,5	4
XVROC06G01		G 1/8"	12	14	5,5	19,5	4
XVROC08G01	8	G 1/8"	14	14	5,5	24,5	5



XVRCF-G



Female connector BSPP thread

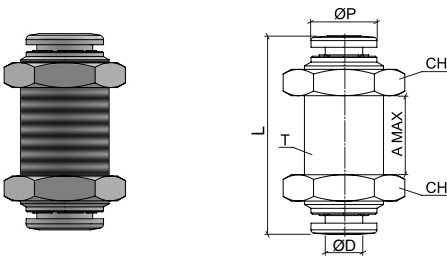


CODE	ØD	T	ØP	A	L	CH
XVRCF04G01	4	G 1/8"	10	7,5	24,5	13
XVRCF06G01	6	G 1/8"	12	7,5	26	13
XVRCF08G02	8	G 1/4"	14	11	30	16

XVRMM



Bulkhead connector

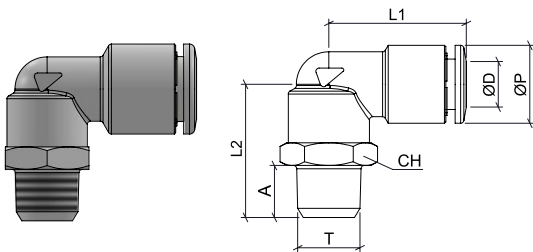


CODE	ØD	T	ØP	A (MAX)	L	CH
XVRMM04	4	M12x1	10	12	30	16
XVRMM06	6	M14x1	12	15	35,5	17
XVRMM08	8	M16x1	14	16	36,5	19
XVRMM10	10	M20x1	16	19	43	24
XVRMM12	12	M22x1,5	19	20	44	25

XVRL-R



Swivel male elbow BSPT thread



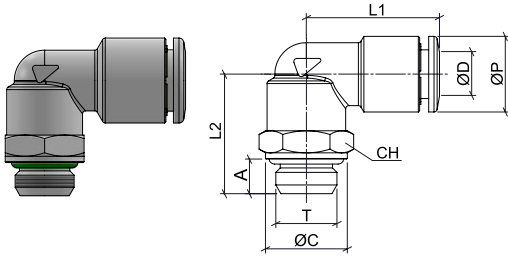
CODE	ØD	T	ØP	A	L1	L2	CH
XVRL04R01	4	R 1/8"	10	8	19,5	20,5	13
XVRL04R02		R 1/4"	10	10	19,5	23	14
XVRL06R01	6	R 1/8"	12	8	21	20,5	13
XVRL06R02		R 1/4"	12	10	21	23	14
XVRL08R01	8	R 1/8"	14	8	23	20,5	14
XVRL08R02		R 1/4"	14	10	23	23	14
XVRL08R03		R 3/8"	14	11	23	24,5	17
XVRL10R02	10	R 1/4"	16	10	26	25,5	16
XVRL10R03		R 3/8"	16	11	26	27	17
XVRL12R02	12	R 1/4"	19	10	31	28	20
XVRL12R03		R 3/8"	19	11	31	28,5	20
XVRL12R04		R 1/2"	19	14	31	31,5	22



XVRL-G



Swivel male elbow BSPP & metric

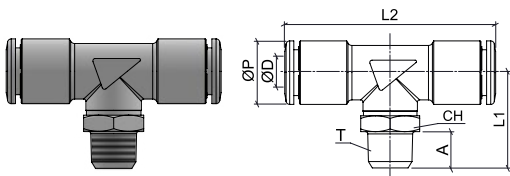


CODE	ØD	T	ØP	ØC	A	L1	L2	CH
XVRL04M5	4	M5x0,8	10	7	4	18	16,5	8
XVRL04G01		G 1/8"	10	13	5,5	19,5	19	13
XVRL04G02		G 1/4"	10	16	6,5	19,5	21,5	16
XVRL06M5	6	M5x0,8	12	7	4	21	16,5	8
XVRL06G01		G 1/8"	12	13	5,5	21	19	13
XVRL06G02		G 1/4"	12	16	6,5	21	21	16
XVRL08G01	8	G 1/8"	14	13	5,5	23	19	13
XVRL08G02		G 1/4"	14	16	6,5	23	21	16
XVRL08G03		G 3/8"	14	20	7,5	23	23	20
XVRL10G02	10	G 1/4"	16	16	6,5	26	23	16
XVRL10G03		G 3/8"	16	20	7,5	26	26	20
XVRL12G02	12	G 1/4"	19	16	6,5	31	-	-
XVRL12G03		G 3/8"	19	20	7,5	31	29	20
XVRL12G04		G 1/2"	19	25	9	31	29	25

XVRT-R



Swivel male tee BSPT thread

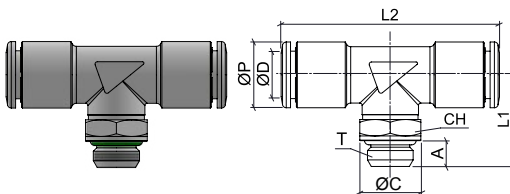


CODE	ØD	T	ØP	A	L1	L2	CH
XVRT04R01	4	R 1/8"	10	8	21	39	13
XVRT06R01	6	R 1/8"	12	8	21	42	13
XVRT06R02		R 1/4"	12	10	23,5	42	14
XVRT08R01	8	R 1/8"	14	8	21	46,5	13
XVRT08R02		R 1/4"	14	10	23,5	46,5	14

XVRT-G



Swivel male tee BSPP & metric thread

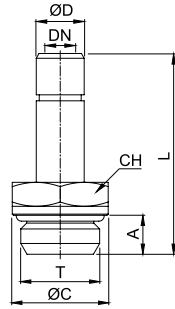
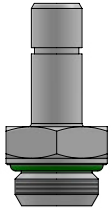


CODE	ØD	T	ØP	ØC	A	L1	L2	CH
XVRT04M5	4	M5x0,8	10	7	4	17	32	8
XVRT04G01		G 1/8"	10	13	5,5	19,5	39	13
XVRT06M5	6	M5x0,8	12	7	4	17	40	8
XVRT06G01		G 1/8"	12	13	5,5	19,5	42	13
XVRT06G02		G 1/4"	12	16	6,5	22	42	16
XVRT08G01	8	G 1/8"	14	13	5,5	19,5	46,5	13
XVRT08G02		G 1/4"	14	16	6,5	22	46,5	16
XVRT10G02	10	G 1/4"	16	16	6,5	23	52	16
XVRT10G03		G 3/8"	16	20	7,5	26	52	20
XVRT12G03	12	G 3/8"	19	20	7,5	26,5	62	20
XVRT12G04		G 1/2"	19	25	9	29	62	25

XVRA-G



Stem adapter BSPP thread

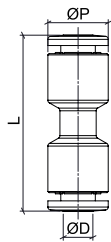
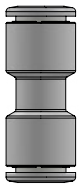


CODE	ØD	T	ØC	A	L	DN	CH
XVRA04G01	4	G 1/8"	13	5,5	27,0	2	13
XVRA06G01	6	G 1/8"	13	5,5	28,0	4	13
XVRA06G02		G 1/4"	16	6,5	30,5	4	16
XVRA08G01	8	G 1/8"	13	5,5	29,5	6	13
XVRA08G02		G 1/4"	16	6,5	32,0	6	16
XVRA10G02	10	G 1/4"	16	6,5	36,5	8	16
XVRA12G03	12	G 3/8"	20	7,5	38,5	10	20

XVRUC



Union connector

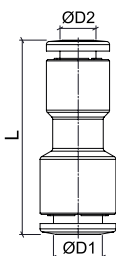
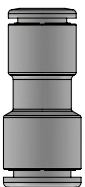


CODE	ØD	ØP	L
XVRUC04	4	10	29
XVRUC06	6	12	32
XVRUC08	8	14	35,5
XVRUC10	10	16	39,5
XVRUC12	12	19	44

XVRG



Reduced union connector



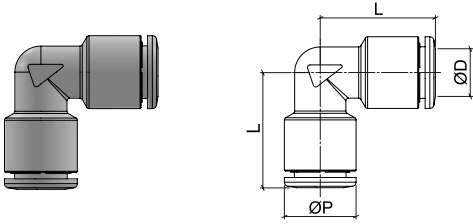
CODE	ØD1	ØD2	L
XVRG0604	6	4	30,5
XVRG0806	8	6	34
XVRG1008	10	8	37
XVRG1210	12	10	41,5



XVRUL



Union elbow

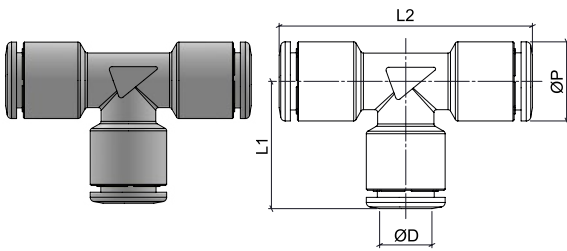


CODE	ØD	ØP	L
XVRUL04	4	10	16,5
XVRUL06	6	12	20,5
XVRUL08	8	14	22,5
XVRUL10	10	16	25
XVRUL12	12	19	29

XVRUT



Union tee

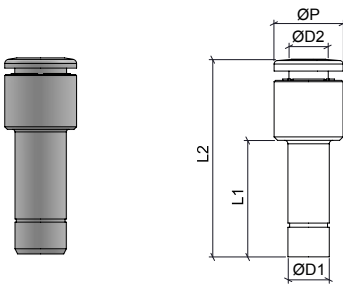


CODE	ØD	ØP	L1	L2
XVRUT04	4	10	16,5	33
XVRUT06	6	12	20,5	41
XVRUT08	8	14	22,5	45
XVRUT10	10	16	25	50,5
XVRUT12	12	19	29	58

XVRGJ



Stem reduction



CODE	ØD1	ØD2	ØP	L1	L2
XVRGJ0604	6	4	10	17	28,5
XVRGJ0806	8	6	12	19,5	32,5
XVRGJ1008	10	8	14	24	38





NSF CERTIFICATION FOR TIERRE GROUP S.P.A.

NSF International

789 N. Dixboro Road, Ann Arbor, MI 48105 USA

RECOGNIZES

Tierre Group S.p.A.
Italy

AS COMPLYING WITH NSF/ANSI 169 AND ALL APPLICABLE REQUIREMENTS.
PRODUCTS APPEARING IN THE NSF OFFICIAL LISTING ARE
AUTHORIZED TO BEAR THE NSF MARK.



ISO/IEC 17065
Product Certification Body
#0216

Certification Program
Accredited by the
American National
Standards Institute



Certification Program
Accredited by the
Standards Council
of Canada

This certificate is the property of NSF International and must be returned upon request. This certificate remains valid as long as this client has products in NSF's Official Listings for the referenced standards. For the most current and complete Listing information, please access NSF's website (www.nsf.org).

July 10, 2019
Certificate# C0484626 - 01

A handwritten signature in black ink, appearing to read "S. Krol", written over a horizontal line.

Sarah Krol
Global Managing Director, Food Safety Product Certification



FOOD CONTACT MATERIALS DECLARATION - EC 1935/2004*

* Full certification available on our website (www.tierrefittings.com) or on request.



Tierre Group S.p.a.
 Headquarter: Via Dell'Industria 18 – 20032 Cormano (MI) – Italy
 Warehouse: Via Dell'Artigianato 2 – 20032 Cormano (MI) – Italy
 Production: Via Marco Biagi 1 – 25045 Castegnato (BS) – Italy
 C.F. e P.IVA IT 12437570158 – Capital €120.000,00 i.v.
 REA MI-1558390



Phone. +39 02 663088.1 – Fax +39 02 66304172
www.tierregroup.com – info@tierregroup.com

DECLARATION OF CONFORMITY



Materials And Articles Intended To Come Into Contact With Food

TIERRE GROUP S.p.a.

DECLARES

That the items related to the following product range:

FOOD GRADE SERIES HFR - Brass push-in fittings with TEA⁺ surface treatment

XVR INOX AISI 316 L SERIES – AISI 316 L stainless steel push-in fittings

ARE IN COMPLIANCE WITH

EC 1935/2004 regulation of the European Parliament and of the Council dated 27th October 2004 on materials and articles intended to come into contact with food and abrogating the Directives 80/590/EEC and 89/109/EEC

Commission Regulation **EC 2023/2006** dated 22nd December 2006 on good manufacturing practice for materials and articles intended to come into contact with food

The items of the above ranges have been produced with the following materials:

FOOD GRADE SERIES HFR:

UNI EN 12164 CW 614 L brass - UNI EN 12164 CW 617 L brass
 Viton - EPDM (option)
 TEA⁺ surface treatment
 AISI 302

XVR INOX AISI 316 L:

AISI 316 L
 Viton - EPDM (option)
 AISI 302



D.M. 174/2004 DECLARATION

* Full certification available on our website (www.tierrefittings.com) or on request.



Tierre Group S.p.a.
 Sede: Via Dell'Industria 18 – 20032 Cormano (MI) – Italia
 Magazzino: Via Dell'Artigianato 2 – 20032 Cormano (MI) – Italia
 Produzione: Via Marco Biagi 1 – 25045 Castegnato (BS) – Italia
 C.F. e P.IVA IT 12437570158 – Cap. Soc. €120.000,00 i.v.
 REA MI-1558390



Tel. +39 02 663088.1 – Fax +39 02 66304172
www.tierregroup.com – info@tierregroup.com

**DECLARATION OF CONFORMITY
 D.M. 174/2004**



Regulation concerning materials and objects intended to be used in fixed systems for the collection, treatment, adduction and distribution of water for human consumption.

TIERRE GROUP S.p.a.

DECLARES

That the items related to the following product range:

XVR INOX AISI 316 L SERIES – *AISI 316 L stainless steel push-in fittings*

ARE IN COMPLIANCE WITH

Italian Decree dated 6th April 2004, n. 174 of the Ministry of Health. Regulation concerning materials and objects intended to be used in fixed systems for the collection, treatment, adduction and distribution of water for human consumption (G.U. n. 166 dated 17-7-2004)

The items of the above ranges have been produced with the following materials:

XVR INOX AISI 316 L:
 AISI 316 L
 Viton - EPDM (option)
 AISI 302

The conformity test has been realized by ICIM on the basis of the above.



ICIM PRODUCT CERTIFICATION: FOOD CONTACT MATERIALS

		
PRD N° 004 B Membro degli Accordi di Mutuo Riconoscimento EA, IAF e ILAC Signatory of EA, IAF and ILAC Mutual Recognition Agreements		
		
<h2>Certificazione di Prodotto</h2> <h3>Product Certification</h3>		
Certificato N. <i>Certificate No.</i>	ICIM-MOC-009809-00	
ALL'AZIENDA / TO THE FIRM		
TIERRE GROUP S.P.A. Via dell'Industria, 18 – 20032 Cormano (MI) Italia		
PER I SEGUENTI PRODOTTI / FOR THE FOLLOWING PRODUCTS		
Raccordi ad innesto rapido in acciaio inox AISI 316L. Raccordi ad innesto rapido in ottone con trattamento T.E.A. AISI 316L stainless steel push-in fittings. Brass push-in fittings with T.E.A. plating		
CON DENOMINAZIONE COMMERCIALE / WITH TRADE NAME/S		
Serie XVR INOX AISI 316L / XVR SERIES INOX AISI 316L Food grade serie HFR / Food grade HFR SERIES		
<small>(Utilizzo limitato ai fluidi per i quali sono previste prove con i simulanti A, C e D come definito dal DM n.338 del 22 luglio 1998, All. I, Cap. I) (Use limited to fluids for which tests are provided for simulants A, C and D as defined by Ministerial Decree no. 388 of 22 July 1998, Annex I, Chap. I.)</small>		
CONFORMEMENTE AL DOCUMENTO NORMATIVO ICIM / IN COMPLIANCE WITH ICIM NORMATIVE DOCUMENT		
0445CS		
PRODOTTI E COMPONENTI A CONTATTO CON ALIMENTI SECONDO DISPOSIZIONI MOCA PRODUCTS AND COMPONENTS IN CONTACT WITH FOOD ACCORDING TO FCM REGULATIONS		
 _____ ICIM S.p.A.		
PRIMA EMISSIONE <small>FIRST ISSUE</small> 13/02/2020	EMISSIONE CORRENTE <small>CURRENT ISSUE</small> 13/02/2020	DATA DI SCADENZA <small>EXPIRING DATE</small> 12/02/2025
<small>ICIM S.p.A. - Piazza Don Enrico Mapelli, 75 - 20099 Sesto San Giovanni (MI)</small>		

0546CM_00_IT



ICIM PRODUCT CERTIFICATION: WATER CONTACT MATERIALS

PRD N° 004 B

Membro degli Accordi di Mutuo Riconoscimento EA, IAF e ILAC
Signatory of EA, IAF and ILAC Mutual Recognition Agreements

Certificazione di Prodotto

Product Certification

Certificato N. **ICIM-CAP-009810-00**
Certificate No.

ALL'AZIENDA / TO THE FIRM

TIERRE GROUP S.P.A.Via dell'Industria, 18 – 20032 Cormano (MI)
Italia

UNITÀ OPERATIVE / OPERATIVE UNITS

Via dell'Industria, 18 – 20032 Cormano (MI)
Italia

PER I SEGUENTI PRODOTTI / FOR THE FOLLOWING PRODUCTS

Raccordi ad innesto rapido in acciaio inox AISI 316L.
AISI 316L stainless steel push-in fittings.

CON DENOMINAZIONE COMMERCIALE / WITH TRADE NAME/S

Serie XVR INOX AISI 316L / XVR SERIES INOX AISI 316L

CONFORMEMENTE AL DOCUMENTO NORMATIVO ICIM / IN COMPLIANCE WITH ICIM NORMATIVE DOCUMENT

0415CS Prodotti e componenti utilizzati a contatto con acqua
destinata al consumo umano (acqua potabile)**0415CS Products and components in contact with water**
intendend for human consumption (drinking water)
ICIM S.p.A.PRIMA EMISSIONE
FIRST ISSUE
13/02/2020EMISSIONE CORRENTE
CURRENT ISSUE
13/02/2020DATA DI SCADENZA
EXPIRING DATE
12/02/2025

0549CM_00_IT

ICIM S.p.A. - Piazza Don Enrico Mapelli, 75 - 20099 Sesto San Giovanni (MI)



NOTES

A series of 26 horizontal grey lines providing space for handwritten notes.



Tierre Group S.p.a.

via dell'Industria, 18 - 20032 Cormano (MI)

Tel. +39 02 663088.1 - Fax +39 02 66304172

www.tierregroup.com - info@tierregroup.com

C.F. e P.IVA 12437570158

Cap. Soc. Euro 120.000,00 i.v. - REA MI-1558390