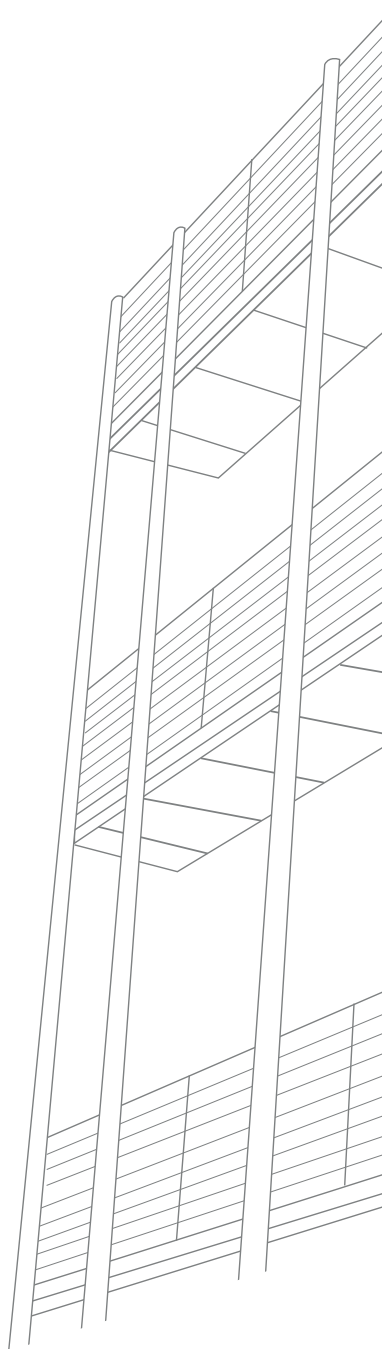


**PUSH-LOCK  
HOSES &  
FITTINGS**









 **TierreGroup**<sup>®</sup>

 **TierreFittings**<sup>®</sup>

 **F-Line**<sup>®</sup>.PRO

 **NET.Fit**<sup>®</sup>

 **INOX.Fit**<sup>®</sup>



# PUSH-LOCK HOSES & FITTINGS

PLUS

**HIGH FLEXIBILITY**

---

**HIGH ABRASION RESISTANCE**

---

**OZONE RESISTANT  
(ASR AND AS-PU TUBE)**

---

**DO NOT REQUIRE CLAMPING,  
REDUCING ASSEMBLY TIME**



**PUSH-LOCK HOSES**



p. 6 / **ASR**



p. 7 / **ASR-HH**



p. 8 / **AS-PU**

**BRASS FITTINGS**



p. 10 / **3467**



p. 10 / **3468**



p. 11 / **3400-SC**



p. 11 / **3440-SC**



p. 12 / **SPHM-R-BS**



p. 12 / **SPHM-N-BS**



p. 12 / **SPHU-BS**

**STEEL FITTINGS**



p. 14 / **3470**



p. 14 / **3471**



p. 14 / **3472**



p. 15 / **3474**

**STAINLESS STEEL AISI 316L FITTINGS**



p. 16 / **SPHM-R**



p. 16 / **SPHM-N**

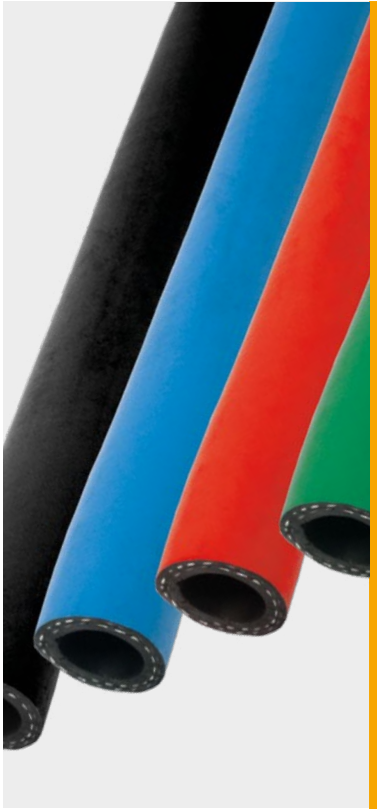


p. 16 / **SPHU**



p. 17 / **SPHA**





-40°C ÷ +75°C air  
0°C ÷ +100°C water  
-40°C ÷ +100°C environment temperature



Max. working pressure:  
16 Bar  
Min. bursting pressure:  
64 Bar



Compressed air & industrial water



Inner layer:  
synthetic rubber  
Reinforcement:  
high tensile textile layer  
Outer layer:  
high performance synthetic rubber

**FEATURES**

- High flexibility
- High abrasion resistance
- 100% silicon free
- Ozone resistance
- For use without hose clamp
- For individual applications, especially for the automobile industry for media air and water

**SILICONE FREE**



Products in compliance with the directive 1907/2006

**RoHS3**

Products in compliance with the directive EU 2015/863

**ASR**



Rubber push-lock hose - ASR

CODE	DN		ID (mm)	OD (mm)	MIN. BENDING RADIUS (mm)	MAX. WORKING PRESSURE 20°C (Bar)	MIN. BURSTING PRESSURE (Bar)	WEIGHT (g/m)	Q.TY FOR ROLL (m)
ASR06	1/4"	6	6,5 <sup>+0,4</sup> <sub>-0,3</sub>	12,0 - 13,0	45	16	64	140	40
ASR10	3/8"	10	9,7 ±0,4	14,8 - 16,0	75	16	64	170	40
ASR13	1/2"	13	13,0 ±0,5	18,5 - 20,0	90	16	64	260	40
ASR16	5/8"	16	16,0 <sup>+0,7</sup> <sub>-0,3</sub>	23,4 - 25,0	115	16	64	340	40
ASR20	3/4"	20	19,3 ±0,5	26,0 - 28,0	135	16	64	420	40
ASR25	1"	25	25,6 ±0,5	34,0 - 36,0	165	16	64	640	40

Black color: standard - Blue, Red and Green: available on demand

DN		Black	Blue	Red	Green
1/4"	6	ASR06NE	ASR06BL	ASR06RO	ASR06VD
3/8"	10	ASR10NE	ASR10BL	ASR10RO	ASR10VD
1/2"	13	ASR13NE	ASR13BL	ASR13RO	ASR13VD
5/8"	16	ASR16NE	ASR16BL	ASR16RO	ASR16VD
3/4"	20	ASR20NE	ASR20BL	ASR20RO	ASR20VD
1"	25	ASR25NE	ASR25BL	ASR25RO	ASR25VD

**Restrictions:** not permitted for use in air brake systems and high dynamic pulsation systems. Not recommended for fuels and hydraulic and lubricating oils. Use of hose only in conjunction with our in-house hose nipples or those that have been tested from our customers or tested and released by our company. The use of customer-specific fittings is in the users responsibility.



All informations mentioned in this document are based on tests with greatest care and based on room temperature of +20°C. However, the matching of these values obtained in practice cannot be guaranteed because experience has shown, that with different application areas the influence of unknown factors which affect the properties and lifetime has to be considered.





-40 °C ÷ +75 °C air  
 0 °C ÷ +120 °C water  
 -40 °C ÷ +120 °C environment temperature



Max. working pressure:  
 14 Bar  
 Min. bursting pressure:  
 56 Bar



Compressed air & industrial water



Inner layer:  
 synthetic rubber  
 Reinforcement:  
 high tensile textile layer  
 Outer layer:  
 high performance synthetic rubber

**FEATURES**

- High flexibility
- High abrasion resistance
- 100% silicon free
- For use without hose clamp
- For use in the injection moulding sector and automobile-industry for the transport of media demineralized water up to 120°C with corrosion inhibitor and media air up to 75°C.

**SILICONE FREE**



Products in compliance with the directive 1907/2006

**RoHS3**

Products in compliance with the directive EU 2015/863

**ASR-HH**



Rubber push-lock hose - ASR-HH

CODE	DN		ID (mm)	OD (mm)	MIN. BENDING RADIUS (mm)	MAX. WORKING PRESSURE 20 °C (Bar)	MIN. BURSTING PRESSURE (Bar)	WEIGHT (g/m)	Q.TY FOR ROLL (m)
ASR-HH06	1/4"	6	6,5 <sup>+0,4</sup> <sub>-.0,3</sub>	12,0 - 13,0	45	14	56	125	40
ASR-HH10	3/8"	10	9,7 ±0,4	14,8 - 16,0	75	14	56	150	40
ASR-HH13	1/2"	13	13,0 ±0,5	18,5 - 20,0	90	14	56	235	40
ASR-HH16	5/8"	16	16,0 <sup>+0,7</sup> <sub>-.0,3</sub>	23,4 - 25,0	115	14	56	350	40

DN		 Blue	 Red
1/4"	6	ASR-HH06BL	ASR-HH06RO
3/8"	10	ASR-HH10BL	ASR-HH10RO
1/2"	13	ASR-HH13BL	ASR-HH13RO
5/8"	16	ASR-HH16BL	ASR-HH16RO

**Restrictions:** not permitted for use in air brake systems and high dynamic pulsation systems. Not recommended for fuels and hydraulic and lubricating oils. Use of hose only in conjunction with our in-house hose nipples or those that have been tested from our customers or tested and released by our company. The use of customer-specific fittings is in the users responsibility.

All informations mentioned in this document are based on tests with greatest care and based on room temperature of +20°C. However, the matching of these values obtained in practice cannot be guaranteed because experience has shown, that with different application areas the influence of unknown factors which affect the properties and lifetime has to be considered.





-20°C ÷ +80°C air & fluids



**Working pressure:**

See the table

**Bursting pressure:**

See the table



Air and fluids suitable with construction materials



Polyurethane (PU) hose with polyester yarn reinforcement for industrial robotics

**HARDNESS**

SHORE A 85

**FEATURES**

- Flexibility
- High abrasion resistance
- Silicon free
- Ozone resistance
- Smooth surfaces
- Excellent crush resistance
- Suitable for contact with food, according to FDA 21 cfr 177.2600 "e" (Rubber articles intended for repeated use in contact with aqueous food)



Products in compliance with the directive 1907/2006







Products in compliance with the directive EU 2015/863

**AS-PU**



Push-lock hose AS-PU

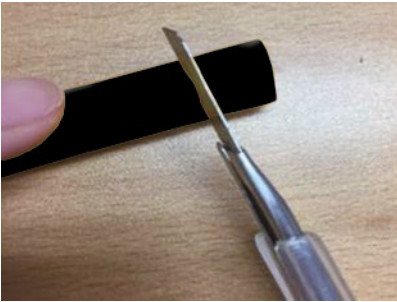
CODE	DN		ID (mm)	OD (mm)	BENDING RADIUS (mm)	WORKING PRESSURE 23°C (Bar)	WORKING PRESSURE 40°C (Bar)	WORKING PRESSURE 60°C (Bar)	BURST PRESSURE 23°C (Bar)	WEIGHT (g/m)	Q.TY ROLL (mt)
AS-PU1/4	1/4"	6	6,3	12,5	25	16	12	8	64	125	100
AS-PU3/8	3/8"	10	9,5	16	50	16	12	8	64	160	100
AS-PU1/2	1/2"	13	12,7	19	75	14	10	7	56	200	100
AS-PU5/8	5/8"	16	15,8	23	120	14	10	7	56	250	50
AS-PU3/4	3/4"	19	19	27	150	14	10	7	56	340	50

DN		 Black	 Light Blue	 Red	 Green
1/4"	6	AS-PU1/4NE	AS-PU1/4AZ	AS-PU1/4RO	AS-PU1/4VD
3/8"	10	AS-PU3/8NE	AS-PU3/8AZ	AS-PU3/8RO	AS-PU3/8VD
1/2"	13	AS-PU1/2NE	AS-PU1/2AZ	AS-PU1/2RO	AS-PU1/2VD
5/8"	16	AS-PU5/8NE	AS-PU5/8AZ	AS-PU5/8RO	AS-PU5/8VD
3/4"	19	AS-PU3/4NE	AS-PU3/4AZ	AS-PU3/4RO	AS-PU3/4VD

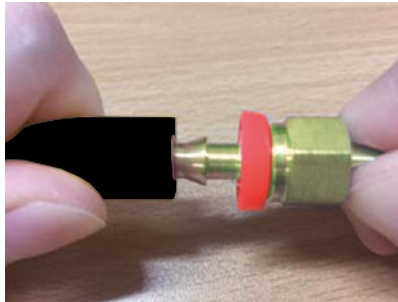


## ASSEMBLY INSTRUCTIONS

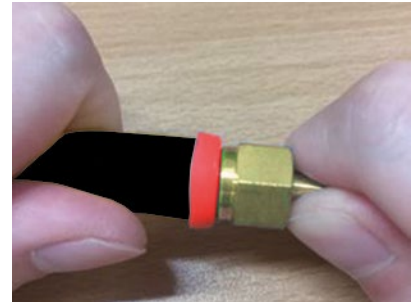
### HOW TO ASSEMBLY



1. Trim the hose end for leave flat and clean hose end.



2. Insert fitting first barb into hose. (use light oil or soapy water lubricate help to ease assembly)

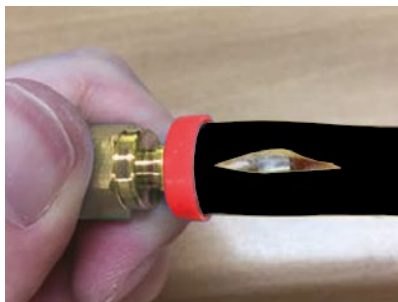


3. Grip the hose or fitting and push on hose until hose seats into finishing cap.
4. Completed Assembly, ensure that the hose is completely inserted.

### HOW TO DISASSEMBLY



1. Cut hose lengthwise from finishing cap to end of barb.

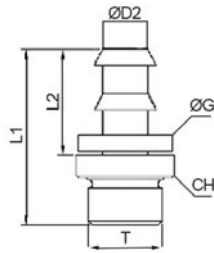


2. Bend hose to expose barbs, then remove hose quickly pulling.



3467

Male barb connector BSPP thread



CODE	DN	T	ØD2	L1	L2	ØG	CH	WEIGHT (g)	
3467TR1814	1/4"	6	G 1/8"	4,0	31,5	20,0	14,0	13	14,0
3467TR1414	1/4"	6	G 1/4"	4,0	35,0	20,0	14,0	17	26,0
3467TR1438	3/8"	10	G 1/4"	7,5	39,1	24,1	17,0	17	27,0
3467TR3838	3/8"	10	G 3/8"	7,5	42,5	24,1	17,0	22	47,0
3467TR3812	1/2"	13	G 3/8"	10,0	46,5	28,0	20,5	22	48,0
3467TR1212	1/2"	13	G 1/2"	10,0	48,5	28,0	20,5	27	79,0
3467TR1258	5/8"	16	G 1/2"	13,5	56,5	36,5	24,0	27	73,0
3467TR3458	5/8"	16	G 3/4"	13,5	58,5	36,5	24,0	32	117,0
3467TR3434	3/4"	20	G 3/4"	16,0	65,3	43,0	27,0	32	123,0

2605

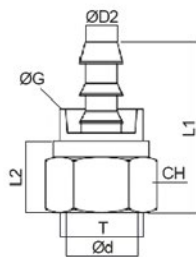
Metal-nitrile composite gasket



CODE	2605TR18	2605TR14	2605TR38	2605TR12	2605TR34	2605TR1
THREADS	1/8"	1/4"	3/8"	1/2"	3/4"	1"

3468

Swivel female barb connector for universal fittings



CODE	DN	T	ØD2	Ød	L1	L2	ØG	CH	WEIGHT (g)	
3468TRM1014	1/4"	6	M10x1	4,0	6	33,5	11,0	14,0	13	17,0
3468TRM1214	1/4"	6	M12x1	4,8	8	34,5	13,0	14,0	14	18,0
3468TRM1614	1/4"	6	M16x1,5	4,8	10	35,8	15,0	14,0	19	33,0
3468TRM1638	3/8"	10	M16x1,5	7,5	10	39,3	15,0	17,0	19	35,0
3468TRM2038	3/8"	10	M20x1,5	7,5	14	39,3	15,0	17,0	24	52,0
3468TRM2012	1/2"	13	M20x1,5	10,0	14	44,0	15,0	20,5	24	56,0
3468TRM2212	1/2"	13	M22x1,5	10,0	16	45,0	17,0	20,5	27	77,0
3468TRM2412	1/2"	13	M24x1,5	10,0	18	47,0	18,0	20,5	30	99,0
3468TRM2458	5/8"	16	M24x1,5	13,5	18	55,0	18,0	24,0	30	97,0
3468TRM3034	3/4"	20	M30x1,5	16,0	22	62,0	18,5	27,0	36	137,0
* 3468TRM361	1"	25	M36x1,5	22,0	28	71,3	21,0	36,5	42	-

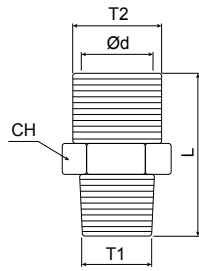
Item 3468 can be combined with our Yellow Brass Compression Fittings range (Tierre Fittings catalogue pag. 233) in order to obtain elbows, tees, etc. Refer to Ød in order to chose the right combination.

\* available soon



**3400-SC**

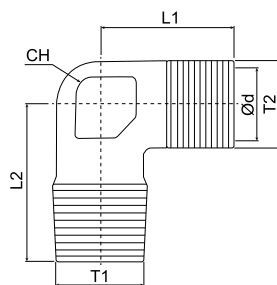
Brass straight adapter BSPT & metric thread



CODE	T1	T2	Ød	L	CH	WEIGHT (g)
3400TR186-SC	R 1/8"	M10x1	6	19,0	11	8,0
3400TR146-SC	R 1/4"	M10x1	6	22,5	14	14,0
3400TR188-SC	R 1/8"	M12x1	8	19,5	13	9,0
3400TR148-SC	R 1/4"	M12x1	8	23,0	14	14,0
3400TR388-SC	R 3/8"	M12x1	8	24,5	17	22,0
3400TR1810-SC	R 1/8"	M16x1,5	10	23,5	17	20,0
3400TR1410-SC	R 1/4"	M16x1,5	10	27,0	17	24,0
3400TR3810-SC	R 3/8"	M16x1,5	10	27,5	17	32,0
3400TR1210-SC	R 1/2"	M16x1,5	10	32,0	22	43,0
3400TR1414-SC	R 1/4"	M20x1,5	14	27,0	22	34,0
3400TR3814-SC	R 3/8"	M20x1,5	14	27,5	22	35,0
3400TR1214-SC	R 1/2"	M20x1,5	14	32,0	22	44,0
3400TR1216-SC	R 1/2"	M22x1,5	16	32,5	24	51,0
3400TR3416-SC	R 3/4"	M22x1,5	16	34,5	27	64,0
3400TR1218-SC	R 1/2"	M24x1,5	18	34,5	27	63,0
3400TR3418-SC	R 3/4"	M24x1,5	18	35,0	27	74,0
3400TR1222-SC	R 1/2"	M30x1,5	22	36,0	32	93,0
3400TR3422-SC	R 3/4"	M30x1,5	22	36,0	32	98,0
3400TR122-SC	R 1"	M30x1,5	22	41,0	36	135,0
3400TR128-SC	R 1"	M36x1,5	28	46,0	41	-

**3440-SC**

Brass elbow adapter BSPT & metric thread

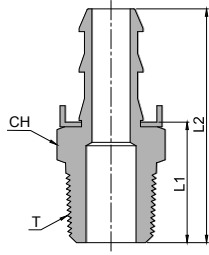


CODE	T1	T2	Ød	L1	L2	CH	WEIGHT (g)
3440TR186-SC	R 1/8"	M10x1	6	17,6	18,0	8	12,0
3440TR146-SC	R 1/4"	M10x1	6	17,6	21,5	10	21,0
3440TR188-SC	R 1/8"	M12x1	8	22,4	18,5	10	18,0
3440TR148-SC	R 1/4"	M12x1	8	22,4	22,0	10	22,0
3440TR388-SC	R 3/8"	M12x1	8	22,4	24,0	12	33,0
3440TR1410-SC	R 1/4"	M16x1,5	10	24,0	25,0	12	31,0
3440TR3810-SC	R 3/8"	M16x1,5	10	24,0	25,0	12	42,0
3440TR1210-SC	R 1/2"	M16x1,5	10	28,8	32,0	19	88,0
3440TR3814-SC	R 3/8"	M20x1,5	14	28,0	30,0	19	70,0
3440TR1214-SC	R 1/2"	M20x1,5	14	28,0	32,0	19	74,0
3440TR3816-SC	R 3/8"	M22x1,5	16	31,2	30,0	19	87,0
3440TR1216-SC	R 1/2"	M22x1,5	16	31,2	33,5	19	69,0
3440TR3416-SC	R 3/4"	M22x1,5	16	32,8	36,5	23	85,0
3440TR1218-SC	R 1/2"	M24x1,5	18	32,8	35,5	23	109,0
3440TR3418-SC	R 3/4"	M24x1,5	18	32,8	36,5	23	145,0
3440TR3422-SC	R 3/4"	M30x1,5	22	40,0	40,0	27	203,0
3440TR122-SC	R 1"	M30x1,5	22	40,0	44,0	27	231,0
3440TR128-SC	R 1"	M36x1,5	28	43,2	48,0	32	254,0



**SPHM-R-BS**

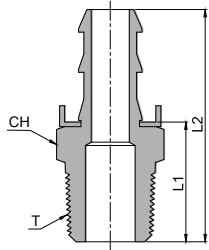
Male barb connector BSPT



CODE	DN		T	CH	L1	L2	WEIGHT (g)
SPHM-4-4R-BS	1/4"	6	R 1/4"	15	22,9	42,7	24,0
SPHM-6-4R-BS	3/8"	10	R 1/4"	15	22,9	45,0	27,0
SPHM-6-6R-BS	3/8"	10	R 3/8"	18	24,6	46,7	27,0
SPHM-8-8R-BS	1/2"	12	R 1/2"	22	28,7	55,6	76,0
SPHM-12-12R-BS	3/4"	20	R 3/4"	27	33,8	76,0	143,0
SPHM-16-16R-BS	1"	25	R 1"	35	38,6	85,6	255,0

**SPHM-N-BS**

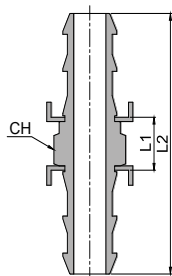
Male barb connector NPT



CODE	DN		T	CH	L1	L2	WEIGHT (g)
SPHM-4-4N-BS	1/4"	6	N 1/4"	15	22,9	42,7	24,0
SPHM-6-4N-BS	3/8"	10	N 1/4"	15	22,9	45,0	27,0
SPHM-6-6N-BS	3/8"	10	N 3/8"	18	24,6	46,7	27,0
SPHM-8-8N-BS	1/2"	12	N 1/2"	22	28,7	55,6	76,0
SPHM-12-12N-BS	3/4"	20	N 3/4"	27	33,8	76,0	143,0
SPHM-16-16N-BS	1"	25	N 1"	35	38,6	85,6	255,0

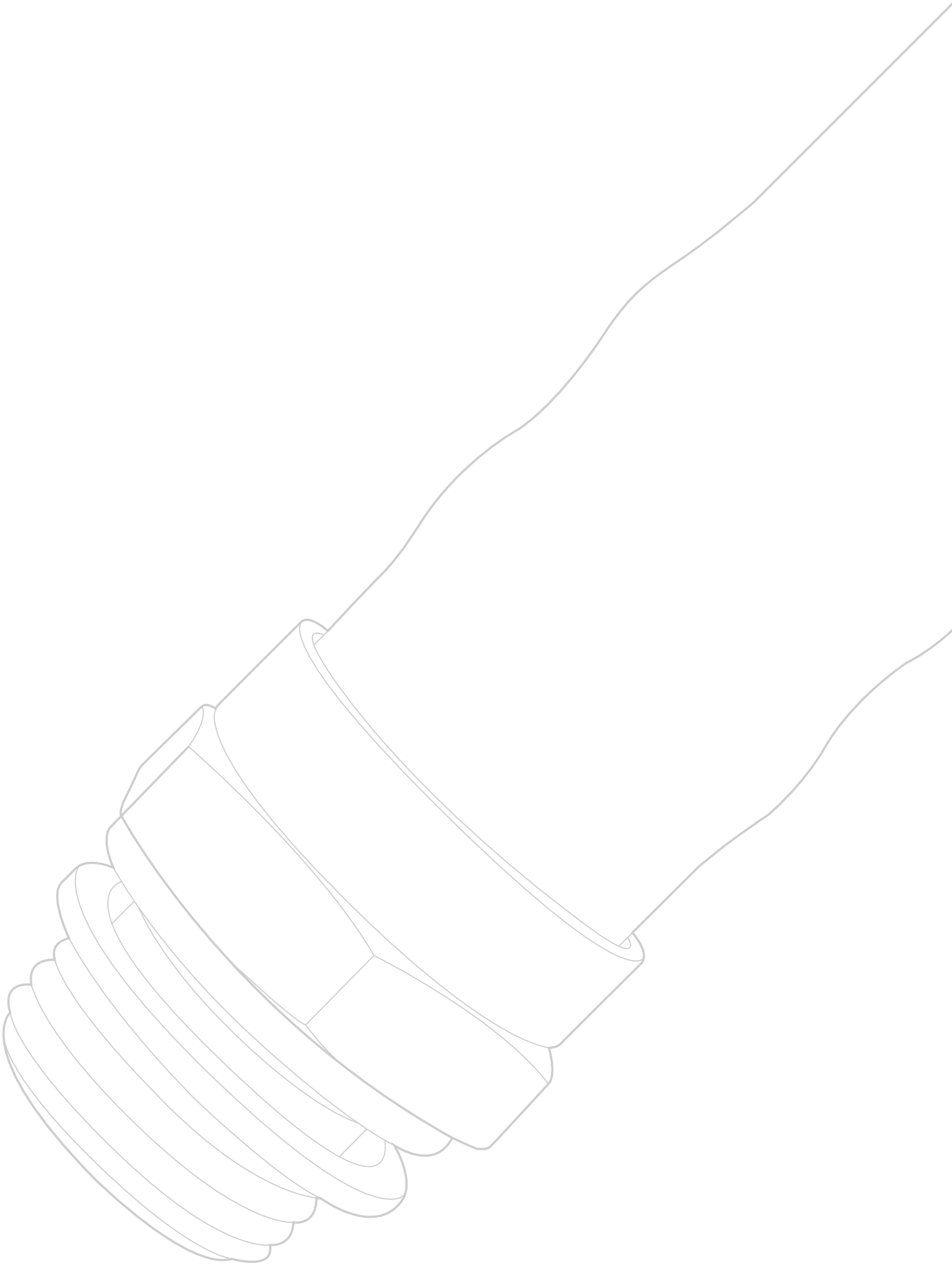
**SPHU-BS**

Unions barb connector



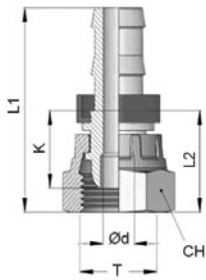
CODE	DN		CH	L1	L2	WEIGHT (g)
SPHU-4-4-BS	1/4"	6	11	10,7	50,3	-
SPHU-6-6-BS	3/8"	10	15	13,2	57,4	-
SPHU-8-8-BS	1/2"	12	18	13,7	67,5	-
SPHU-12-12-BS	3/4"	20	24	14,3	98,7	-
SPHU-16-16-BS	1"	25	32	16,5	110,5	-





3470

Straight swivel female ogival seat 60°C BSPP thread

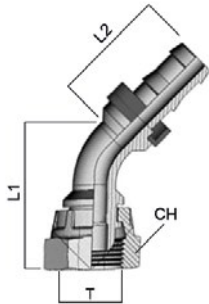


CODE	DN	Ød	T	L1	L2	K	CH	WEIGHT (g)
3470TR14	1/4"	6	4,0	G 1/4"	37,2	17,9	13,2	19
3470TR38	3/8"	10	7,0	G 3/8"	44,2	21,7	14,2	22
3470TR12	1/2"	12	9,5	G 1/2"	51,2	28,5	22,5	27
* 3470TR34	3/4"	20	14,5	G 3/4"	68,2	39,2	27,6	32
* 3470TR1	1"	25	20,0	G 1"	74,0	38,4	28,4	41

\* 3/4" and 1" without plastic collar

3471

Swivel elbow 45°, female ogival seat 60° BSPP thread

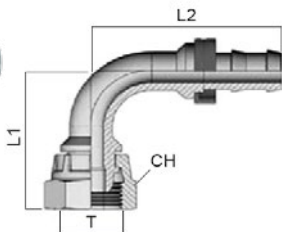


CODE	DN	T	L1	L2	CH	WEIGHT (g)
3471TR14	1/4"	6	G 1/4"	39,5	25,0	19
3471TR38	3/8"	10	G 3/8"	51,0	31,0	22
3471TR12	1/2"	12	G 1/2"	64,5	36,0	27
* 3471TR34	3/4"	20	G 3/4"	88,5	51,0	32
* 3471TR1	1"	25	G 1"	88,5	73,5	46

\* 3/4" and 1" without plastic collar

3472

Swivel elbow 90°, female ogival seat 60° BSPP thread



CODE	DN	T	L1	L2	CH	WEIGHT (g)
3472TR14	1/4"	6	G 1/4"	29,5	40,0	19
3472TR38	3/8"	10	G 3/8"	42,0	53,5	22
3472TR12	1/2"	12	G 1/2"	50,0	62,5	27
* 3472TR34	3/4"	20	G 3/4"	69,0	90,0	32
* 3472TR1	1"	25	G 1"	86,5	105,0	40

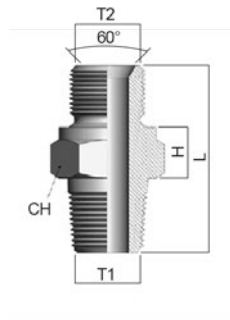
\* 3/4" and 1" without plastic collar





3474

Straight adapter BSPT/BSPP thread with ogival seat 60°C

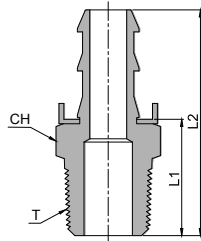


CODE	T1	T2	L	H	CH	WEIGHT (g)
3474TR14	R 1/4"	G 1/4"	33,0	8	19	31,0
3474TR38	R 3/8"	G 3/8"	39,0	11	22	50,0
3474TR12	R 1/2"	G 1/2"	43,0	10	27	86,0
3474TR34	R 3/4"	G 3/4"	46,5	11	32	144,0
3474TR1	R 1"	G 1"	56,0	13	41	236,0



**SPHM-R**

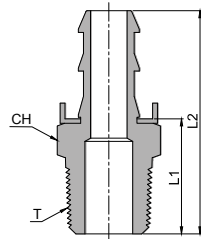
Male barb connector BSPT



CODE	DN		T	CH	L1	L2	WEIGHT (g)
SPHM-4-4R	1/4"	6	R 1/4"	15	22,9	42,7	21,0
SPHM-6-4R	3/8"	10	R 1/4"	15	22,9	45,0	25,0
SPHM-6-6R	3/8"	10	R 3/8"	18	24,6	46,7	25,0
SPHM-8-8R	1/2"	12	R 1/2"	22	28,7	55,6	70,0
SPHM-12-12R	3/4"	20	R 3/4"	27	33,8	76,0	130,0
SPHM-16-16R	1"	25	R 1"	35	38,6	85,6	240,0

**SPHM-N**

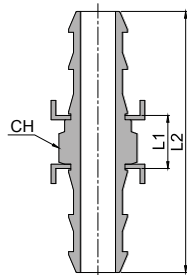
Male barb connector NPT



CODE	DN		T	CH	L1	L2	WEIGHT (g)
SPHM-4-4N	1/4"	6	N 1/4"	15	22,9	42,7	21,0
SPHM-6-4N	3/8"	10	N 1/4"	15	22,9	45,0	25,0
SPHM-6-6N	3/8"	10	N 3/8"	18	24,6	46,7	25,0
SPHM-8-8N	1/2"	12	N 1/2"	22	28,7	55,6	70,0
SPHM-12-12N	3/4"	20	N 3/4"	27	33,8	76,0	130,0
SPHM-16-16N	1"	25	N 1"	35	38,6	85,6	240,0

**SPHU**

Unions barb connector

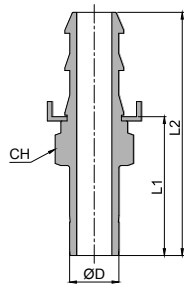


CODE	DN		CH	L1	L2	WEIGHT (g)
SPHU-4-4	1/4"	6	11	10,7	50,3	-
SPHU-6-6	3/8"	10	15	13,2	57,4	27,2
SPHU-8-8	1/2"	12	18	13,7	67,5	-
SPHU-12-12	3/4"	20	24	14,3	98,7	-
SPHU-16-16	1"	25	32	16,5	110,5	-



**SPHA**

Tube barb connector



CODE	DN		ØD	CH	L1	L2	WEIGHT (g)
SPHA-4-4T	1/4"	6	1/4"	11	25,2	45,0	57,0
SPHA-6-6T	3/8"	10	3/8"	15	29,5	51,6	57,0
SPHA-8-8T	1/2"	12	1/2"	18	35,8	62,7	57,0
SPHA-12-12T	3/4"	20	3/4"	24	37,6	79,8	89,6
SPHA-16-16T	1"	25	1"	32	46,7	93,7	176,5

Item SPHA can be combined with our S-LOK Fittings range (INOX.Fit catalogue) in order to obtain elbows, tees, etc.

**Refer to ØD in order to chose the right combination.**













**Tierre Group S.p.a.**

Via dell'Industria, 18 - 20032 Cormano (MI)

Tel. +39 02 663088.1 - Fax +39 02 66304172

[www.tierregroup.com](http://www.tierregroup.com) - [info@tierregroup.com](mailto:info@tierregroup.com)

C.F. e P.IVA 12437570158

Cap. Soc. Euro 120.000,00 i.v. - REA MI-1558390

Push-Lock Hoses & Fittings Catalogue - Ed. 1.0 - 09/20