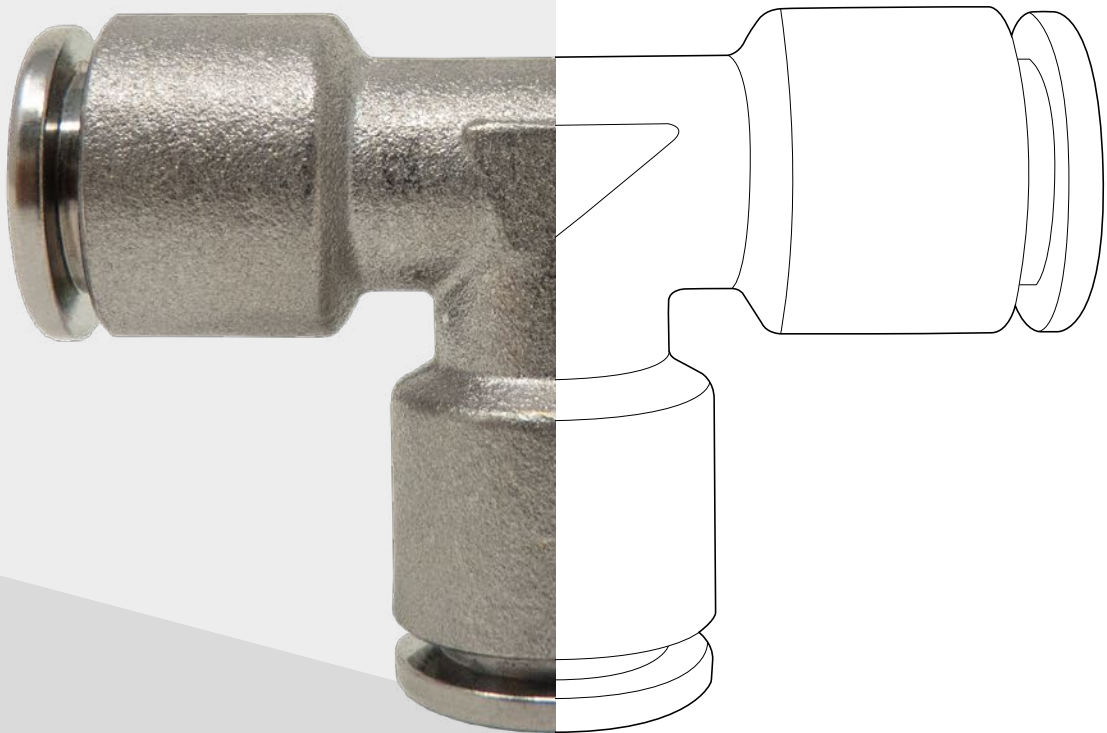




FOOD GRADE HFR SERIES

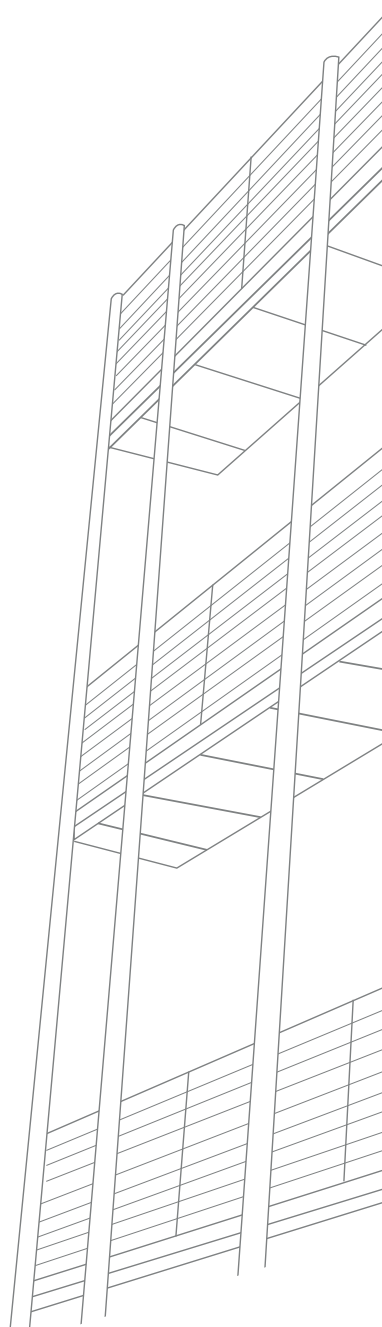
MADE IN ITALY



25
anniversary







 **TierreGroup**®

 **TierreFittings**®

 **F-Line.PRO**

 **NET.Fit**®

 **INOX.Fit**®



FOOD GRADE HFR SERIES



PLUS

**TEA+ SURFACE TREATMENT ABLE TO
GUARANTEE HIGH RESISTANCE TO
CORROSION AND CHEMICALS**

RELIABILITY and **HIGH MECHANICAL
EFFICIENCY** as key features for high
performances

COMPLETE RANGE for any application

Suitable for **FOOD & BEVERAGE AND
COFFEE MACHINES**

**TAILOR MADE PRODUCTS ON
SPECIFIC CUSTOMERS NEEDS**

M A D E I N I T A L Y

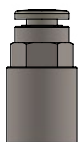




p. 8 / **HFRG-G**



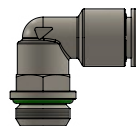
p. 8 / **HFROC-M**



p. 8 / **HFRCF-G**



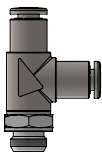
p. 9 / **HFRMM**



p. 9 / **HFRL-G**



p. 9 / **HFRT-G**



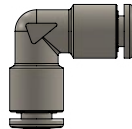
p. 10 / **HFRST-G**



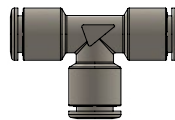
p. 10 / **HFRA-G**



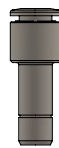
p. 10 / **HFRUC**



p. 11 / **HFRUL**

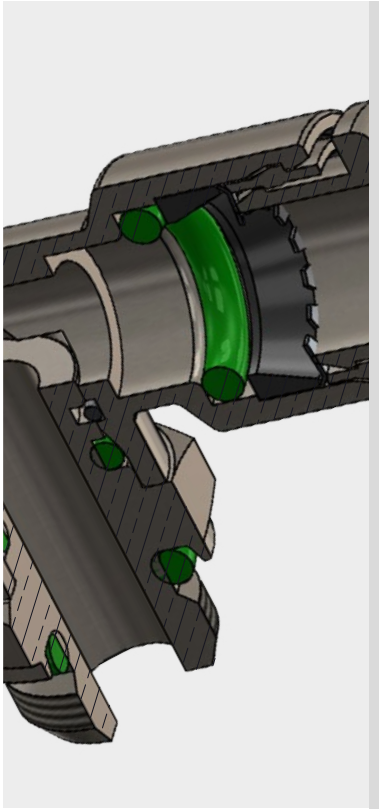


p. 11 / **HFRUT**



p. 11 / **HFRGJ**





-20°C ÷ 150°C



Working Pressure:

20 Bar

Negative Pressure:

- 0,95 Bar (- 95 Kpa)



Compressed air, vacuum,
water and fluids suitable with
the construction materials



- Parallel gas BSPP ISO 228

G1/8" - G1/2"

- Metric ISO 262

M5 and M7



Polyamide PA, Polyethylene
PE, FEP, and PTFE

Body: TEA⁺ plated brass

Collet: TEA⁺ plated brass

Collar: PVDF-UHM FDA compliant

Lock claw: Stainless steel AISI 301

Back ring: PVDF-UHM FDA compliant

O'ring: FKM NSF/ANSI 61 certified
and FDA compliant

Seal: FKM NSF/ANSI 61 certified
and FDA compliant

Retaining ring for swivel system:
Stainless steel AISI 302



NSF/ANSI 169



Food contact materials
EC 1935/2004



ICIM certified product
food contact materials

SILICONE FREE



Products in compliance with
the directive 1907/2006

RoHS3

Products in compliance with
the directive EU 2015/863



TEA⁺

HIGHLY CORROSION RESISTANT in strong acidic or alkaline environments:

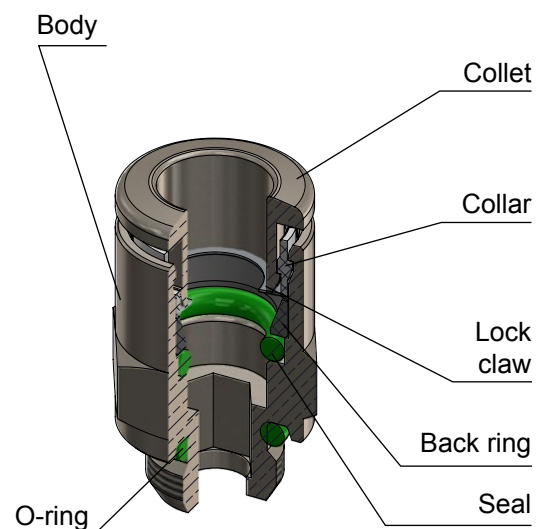
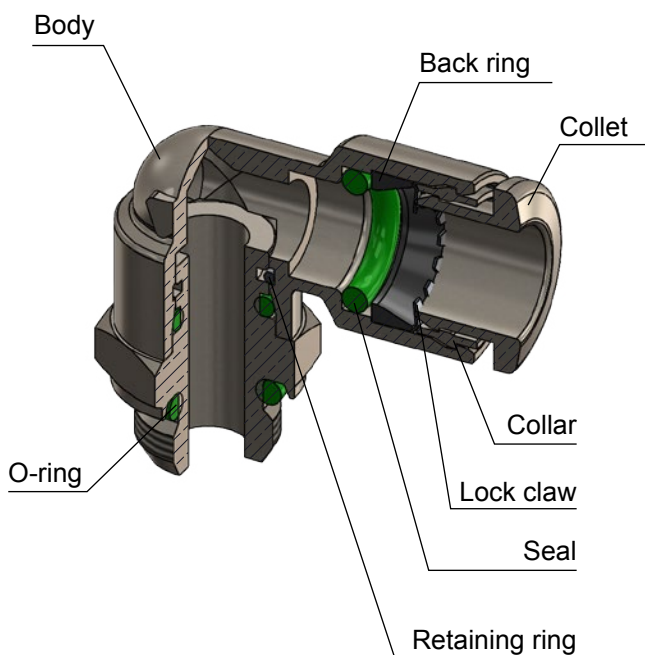
- thicknesses of 2 - 4 µm withstand
- ASS 96h and CASS 48h salt spray tests

EN 16058 rig test (26 weeks)

NSF 61 section 8- pH5 Commercial hot (82°C) for taps, sanitary fittings, HVAC

EN 16889 for professional coffee machines and other "food zone" devices.

CONSTRUCTION DETAILS

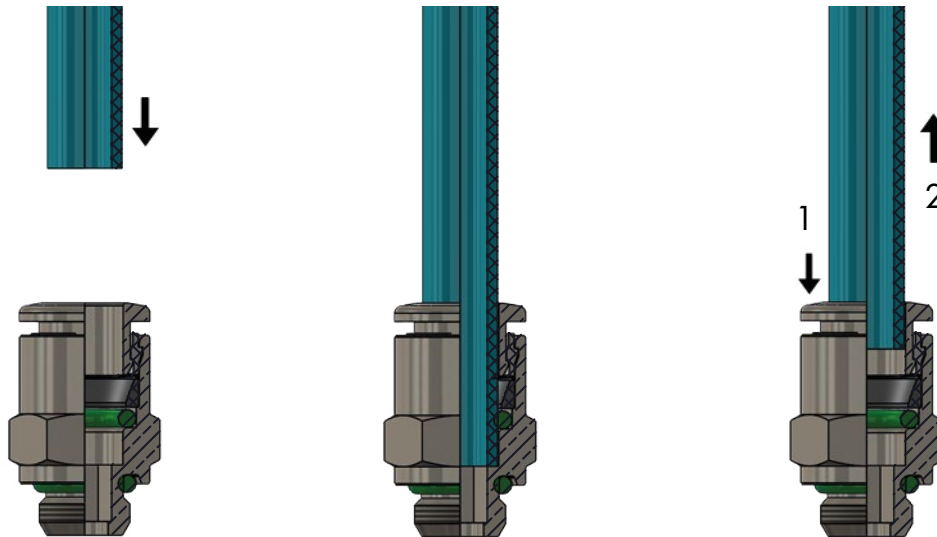


INSERTION OF THE TUBE INTO THE FITTING

- Make sure the tube is fully inserted into the fitting.
- To insert the tube into the fitting cut the tube off square (90°), insert tube up to the fitting end stop, and pull back gently to make sure it is correctly connected.
- If there is any damage or scratches on the tube surface the tube is an oval shape, air leakage and tube release may occur. Check the tube condition carefully.
- The OD of polyurethane tube expands when pressure is applied. Reinsertion into the fitting may not always be possible. Check the OD of the tube and renew it the expansion is out of tolerance.

DISCONNECTION OF THE TUBE FROM THE FITTING

- Make sure the pressure in the system is zero before releasing the tube from the fitting.
- To release the tube, press the release sleeve towards the fitting with one hand (1) and pull the tube away from the fitting with the other hand (2).
- Always remove the section of tube previously inserted into the fitting before reinserting the tube by cutting back the tube. Always use the correct tube cutter in order to cut the tube square and free of damage.



TUBE TOLERANCES

Ø TUBE (mm)	4	6	8	10	12
TOLERANCE (mm)	± 0,1	± 0,1	± 0,1	± 0,15	± 0,15

TUBE INSERTION DEPTH

Ø TUBE (mm)	4	6	8	10	12
TUBE INSERTION LENGTH (mm)	14	15,5	17,5	19	21

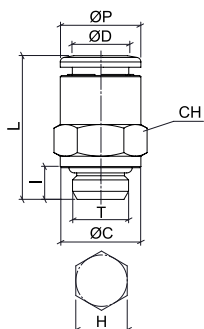
TIGHTENING TORQUE

PARALLEL GAS BSPP ISO 228 & METRIC ISO 262

THREAD	M5x0,8	M7x1	1/8"	1/4"	3/8"	1/2"
Nm	1 ± 20%	3 ± 20%	6 ± 20%	7,5 ± 20%	9 ± 20%	9 ± 20%



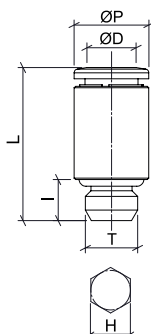
HFRG-G



Male connector BSPP & metric thread

CODE	ØD	T	ØP	ØC	A	L	CH	H
HFRG04M5	4	M5x0,8	10	7	4	19,0	9	2,5
HFRG04G01		G 1/8"	10	14	5,5	18,0	10	3
HFRG04G02		G 1/4"	10	16	6,5	18,0	10	3
HFRG06M5	6	M5x0,8	12	7	4	21,0	11	2,5
HFRG06G01		G 1/8"	12	14	5,5	19,5	12	4
HFRG06G02		G 1/4"	12	16	6,5	19,5	12	4
HFRG08G01	8	G 1/8"	14	14	5,5	24,5	14	5
HFRG08G02		G 1/4"	14	16	6,5	21,5	14	6
HFRG08G03		G 3/8"	14	20	7,5	21,5	14	6
HFRG10G02	10	G 1/4"	16	16	6,5	27,5	16	7
HFRG10G03		G 3/8"	16	20	7,5	25,0	16	8
HFRG12G02	12	G 1/4"	19	16	6,5	30,0	19	7
HFRG12G03		G 3/8"	19	22	7,5	29,5	19	10
HFRG12G04		G 1/2"	19	25	9	28,0	19	10

HFROC

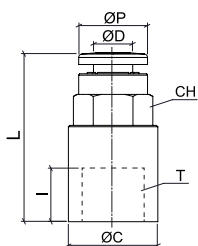
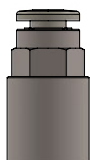


Male connector round body metric thread

CODE	ØD	T	ØP	A	L	H
HFROC04M7	4	M7x1	10	6	20,5	2,5
* HFROC06M7C	6	M7x1	10	5,5	20,5	4

* compact version

HFRCF-G



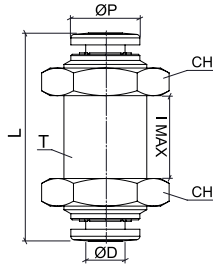
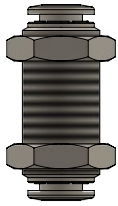
Female connector BSPP thread

CODE	ØD	T	ØP	ØC	A	L	CH
HFRCF04G01	4	G 1/8"	10	13	7,5	24,5	13
HFRCF04G02		G 1/4"	10	16	11	27,0	10
HFRCF06G01	6	G 1/8"	12	13	7,5	26,0	12
HFRCF06G02		G 1/4"	12	16	11	29,0	12
HFRCF08G01	8	G 1/8"	14	13	7,5	27,0	14
HFRCF08G02		G 1/4"	14	16	11	30,0	14

HFRMM



Bulkhead connector

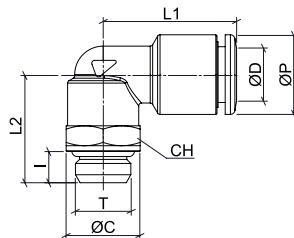
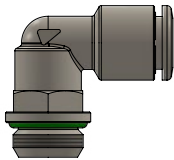


CODE	ØD	T	ØP	L	A MAX	CH
HFRMM04	4	M12x1	10	34,0	15	16
HFRMM06	6	M14x1	12	32,0	12	17
HFRMM08	8	M16x1	14	36,5	16	19
HFRMM10	10	M20x1	16	43,0	19	24
HFRMM12	12	M22x1,5	19	44,0	20	25

HFRL-G



Swivel male elbow BSPP & metric

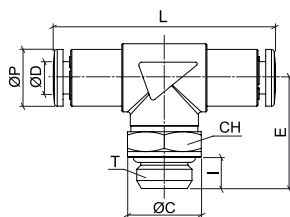
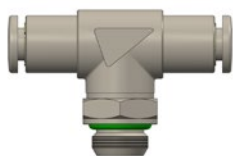


CODE	ØD	T	ØP	ØC	A	L1	L2	CH
HFRLO4M5	4	M5x0,8	10	7	4	18,0	15,0	8
HFRLO4G01		G 1/8"	10	13	5,5	19,5	19,0	13
HFRLO4G02		G 1/4"	10	16	6,5	19,5	21,5	13
HFRLO6M5	6	M5x0,8	12	7	4	19,5	16,0	8
HFRLO6G01		G 1/8"	12	13	5,5	21,0	19,0	13
HFRLO6G02		G 1/4"	12	16	6,5	21,0	21,5	13
HFRLO8G01	8	G 1/8"	14	13	5,5	23,0	19,0	13
HFRLO8G02		G 1/4"	14	16	6,5	23,0	21,5	13
HFRLO8G03		G 3/8"	14	20	7,5	23,0	23,0	13
HFRLO10G02	10	G 1/4"	16	16	6,5	26,0	23,0	16
HFRLO10G03		G 3/8"	16	20	7,5	26,0	26,0	16
HFRLO12G02	12	G 1/4"	19	16	6,5	31,0	25,5	20
HFRLO12G03		G 3/8"	19	20	7,5	31,0	26,5	20
HFRLO12G04		G 1/2"	19	25	9	31,0	29,0	20

HFRT-G



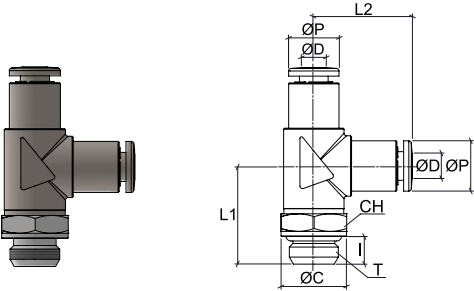
Swivel male tee BSPP thread



CODE	ØD	T	ØP	A	L1	L2	CH
HFRT04G01	4	G 1/8"	10	5,5	39,0	19,5	13
HFRT06G01	6	G 1/8"	12	5,5	42,0	19,5	13
HFRT06G02		G 1/4"	12	6,5	42,0	22,0	13
HFRT08G01	8	G 1/8"	14	5,5	46,5	19,5	13
HFRT08G02		G 1/4"	14	6,5	46,5	22,0	13



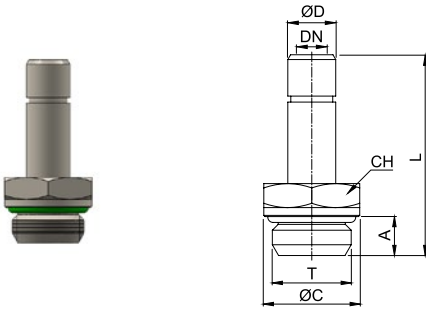
HFRST-G



Swivel male lateral tee BSPP thread

CODE	ØD	T	ØP	ØC	A	L1	L2	CH
HFRST04G01	4	G 1/8"	10	13	5,5	19,5	19,5	13

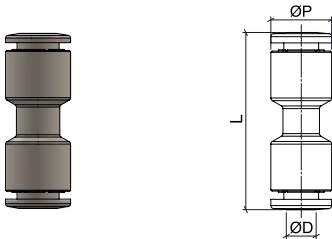
HFRA-G



Stem adapter BSPP thread

CODE	ØD	T	ØC	A	L	DN	CH
HFRA04G01	4	G 1/8"	13	5,5	28,0	2,0	13
HFRA06G01	6	G 1/8"	13	5,5	29,0	4,0	13
HFRA06G02		G 1/4"	16	6,5	30,5	4,0	13
HFRA08G01	8	G 1/8"	13	5,5	30,0	6,0	13
HFRA08G02		G 1/4"	16	6,5	32,0	6,0	13
HFRA10G01	10	G 1/8"	13	5,5	35,0	6,0	13
HFRA10G02		G 1/4"	16	6,5	36,5	8,0	13
HFRA12G02	12	G 1/4"	16	6,5	37,5	8,0	13

HFRUC



Union connector

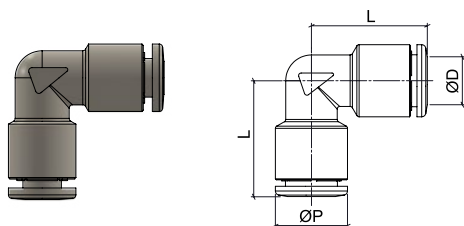
CODE	ØD	ØP	L
HFRUC04	4	10	29,0
HFRUC06	6	12	32,0
HFRUC08	8	14	35,5
HFRUC10	10	16	39,5
HFRUC12	12	19	44,0



HFRUL



Union elbow

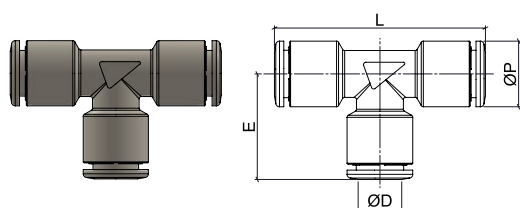


CODE	ØD	ØP	L
HFRUL04	4	10	18,0
HFRUL06	6	12	19,5
HFRUL08	8	14	22,5
HFRUL10	10	16	25,5
HFRUL12	12	19	29,0

HFRUT



Union tee

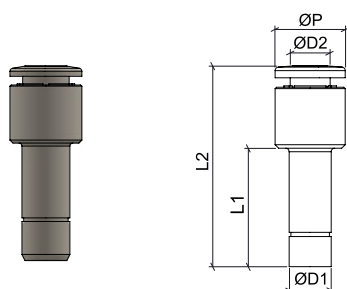


CODE	ØD	ØP	L1	L2
HFRUT04	4	10	18,0	36,0
HFRUT06	6	12	19,5	39,0
HFRUT08	8	14	22,5	45,0
HFRUT10	10	16	25,5	51,0
HFRUT12	12	19	29,0	58,0

HFRGJ



Stem reduction



CODE	ØD1	ØD2	ØP	L1	L2
HFRGJ0604	6	4	10	17,0	28,5
HFRGJ0806	8	6	12	19,5	34,5
HFRGJ1008	10	8	14	24,0	37,5
HFRGJ1210	12	10	16	25,0	40,0



NSF CERTIFICATION FOR TIERRE GROUP S.P.A.

NSF International

789 N. Dixboro Road, Ann Arbor, MI 48105 USA

RECOGNIZES

Tierre Group S.p.A.
Italy

AS COMPLYING WITH NSF/ANSI 169 AND ALL APPLICABLE REQUIREMENTS.
PRODUCTS APPEARING IN THE NSF OFFICIAL LISTING ARE
AUTHORIZED TO BEAR THE NSF MARK.



ISO/IEC 17065
Product Certification Body
#0216
Certification Program
Accredited by the
American National
Standards Institute



Certification Program
Accredited by the
Standards Council
of Canada

This certificate is the property of NSF International and must be returned upon request. This certificate remains valid as long as this client has products in NSF's Official Listings for the referenced standards. For the most current and complete Listing information, please access NSF's website (www.nsf.org).

July 10, 2019
Certificate# C0484626 - 01

Sarah Krol
Global Managing Director, Food Safety Product Certification



FOOD CONTACT MATERIALS DECLARATION - EC 1935/2004 *

* Full certification available on our website (www.tierrefittings.com) or on request.



Tierre Group S.p.a.
 Headquarter: Via Dell'Industria 18 – 20032 Cormano (MI) – Italy
 Warehouse: Via Dell'Artigianato 2 – 20032 Cormano (MI) – Italy
 Production: Via Marco Biagi 1 – 25045 Castegnato (BS) – Italy
 C.F. e P.IVA IT 12437570158 – Capital €120.000,00 i.v.
 REA MI-1558390

Phone. +39 02 663088.1 – Fax +39 02 66304172
www.tierregroup.com – info@tierregroup.com

DECLARATION OF CONFORMITY**FCMs**

Food Contact Materials



TIERRE GROUP S.p.a.
DECLARES

That the items related to the following product range

BRASS PUSH-IN FITTINGS WITH TEA+ SURFACE TREATMENT
HFR SERIES

items produced with the following materials
 UNI EN 12164 CW 614 N brass - UNI EN 12164 CW 617 N brass
 Viton - EPDM (option)
 TEA+ surface treatment - AISI 302 Stainless Steel

ARE IN COMPLIANCE WITH

To the following General Community Legislation:

EC 1935/2004 regulation of the European Parliament and of the Council dated 27th October 2004 on materials and articles intended to come into contact with food and abrogating the Directives 80/590/EEC and 89/109/EEC.
 Commission Regulation **EC 2023/2006** dated 22nd December 2006 on good manufacturing practice for materials and articles intended to come into contact with food.
 Commission Regulation **EU 2020/1245** dated 2nd September 2020, on plastic materials and articles intended to come into contact with food.

To the following General National Legislation:

Art. 1, art. 3, art 4 paragraph 5, art. 6 of the Presidential Decree dated 23rd August 1982, No. 777, Implementation of the Directive (EEC) No. 76/893 and subsequent amendments, starting from the entry into force of the Legislative Decree dated 10th February 2017, No. 29, Sanctioning discipline for the violation of the provisions as listed in the CE regulations regarding materials and objects intended to come into contact with food products and food in general.

To the following Specific National Legislation:

Ministerial Decree No. 34 dated 21st March 1973, Hygienic regulations for packaging, containers, utensils intended to come into contact with food substances or substances for personal use and subsequent updates and modifications.

These materials are in compliance with the applicable community and national regulations concerning materials and articles intended to come into contact with food. Consequently, the products meet the requirements of the European Regulations and National Legislation as listed above.



ICIM CERTIFICATION PRODUCT - FOOD CONTACT MATERIALS - TIERRE GROUP S.P.A.

<p>Il presente documento annulla e sostituisce il certificato di pari numero emesso in data 13/05/2021.</p>	 <small>PRD N° 004 B</small>	
	<h2>Certificazione di Prodotto</h2> <h3>Product Certification</h3>	
	<hr/> <p>Certificato N. ICIM-MOC-009809-00 Certificate No.</p> <hr/>	
	<p><small>ALL'AZIENDA / TO THE FIRM</small></p> <p>TIERRE GROUP S.P.A. VIA DELL'INDUSTRIA, 18 20032 CORMANO MI IT - Italia</p> <hr/>	
	<p><small>PER I SEGUENTI PRODOTTI / FOR THE FOLLOWING PRODUCTS</small></p> <p>Raccordi ad innesto rapido in acciaio inox AISI 316L. Raccordi ad innesto rapido in ottone con trattamento T.E.A. Raccordi ad innesto rapido in ottone CW510L AISI 316L stainless steel push-in fittings. Brass push-in fittings with T.E.A. plating CW510L Brass push-in fittings</p> <hr/>	
	<p><small>CON DENOMINAZIONE COMMERCIALE / WITH TRADE NAME/S</small></p> <p>Serie XVR INOX AISI 316L / XVR SERIES INOX AISI 316L Food grade serie HFR/ Food grade HFR SERIES Serie LFR(P) / LFR(P) Series Serie HLFR (P) / HLFR(P) Series</p> <hr/>	
	<p><small>CONFORMEMENTE AL DOCUMENTO NORMATIVO ICIM / IN COMPLIANCE WITH ICIM NORMATIVE DOCUMENT</small></p> <p>0445CS</p> <hr/>	
	<p><small>PRODOTTI E COMPONENTI A CONTATTO CON ALIMENTI SECONDO DISPOSIZIONI MOCA</small> <small>PRODUCTS AND COMPONENTS IN CONTACT WITH FOOD ACCORDING TO FCM REGULATIONS</small></p> <hr/>	
	<div style="display: flex; align-items: center; justify-content: center;">  <div style="margin-left: 10px;"> <p><small>Vincenzo Delacqua</small> <small>Rappresentante Direzione / Management Representative</small> ICIM S.p.A.</p> </div> </div> <hr/>	
	<p><small>PRIMA EMISSIONE</small> <small>FIRST ISSUE</small> 13/02/2020</p>	<p><small>EMISSIONE CORRENTE</small> <small>CURRENT ISSUE</small> 09/11/2022</p>

ICIM S.p.A. - Piazza Don Enrico Mapelli, 75 - 20099 Sesto San Giovanni (MI)
 Società soggetta all'attività di direzione e coordinamento di ICIM GROUP Srl

0549CM_00_IT



NOTES



A series of horizontal lines spanning the width of the page, providing a space for handwritten notes.





Tierre Group S.p.a.

via dell'Industria, 18 - 20032 Cormano (MI)

Tel. +39 02 663088.1 - Fax +39 02 66304172

www.tierregroup.com - info@tierregroup.com

C.F. e P.IVA 12437570158

Cap. Soc. Euro 120.000,00 i.v. - REA MI-1558390