

QUICK COUPLING FOR FLUIDS

CD-100

PLUS

**DIFFERENT MATERIALS
FOR EVERY KIND OF APPLICATION**

**ARE INDICATED IN OXIDANT
AND CORROSIVE ENVIROMENTS
WITH VERSION IN AISI 303**

**EASY HANDLING
AND CONNECTION/DISCONNECTION**

**AVAILABLE WITH FREE PASSAGE,
SINGLE INTERCEPTED
AND DOUBLE INTERCEPTED**





p. 476 / **CD-100**



p. 476 / **ACD-100M**

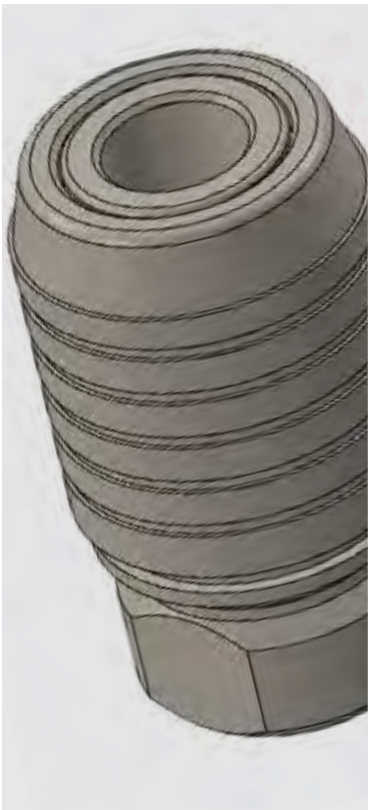


p. 476 / **ACD-100H**



p. 476 / **ACD-100E**





From -10°C to +95°C
with NBR seal
From -15°C to +200°C
with VITON seal
From -40°C to +95°C
with EPDM seal
From -60°C to +200°C
with SILICONE seal



Suggest: from 0 to 12 Bar
Max: 35 Bar



Air, water, gas, vacuum, mineral
and synthetic acids (not aggressive
for the brass version) and fluids
suitable with construction materials



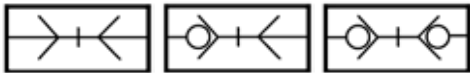
Taper BSPT G1/2"
Parallel BSPP G1/2"

FLOW
1900 l/min



10,5 mm

CONFIGURATIONS
PL, SO e DO



Products in compliance with
the directive 2002/95/EC

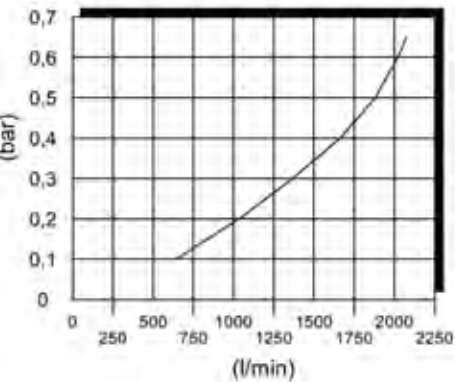
RoHS2

Products in compliance with
the directive 2011/65/EU



COMPONENTS	CD-100	CD-100-L	CD-100-X	CD-100-X-316
Body	Nickel-plated steel	Brass	Stainless steel AISI 303	Stainless steel AISI 316
Slide	Nickel-plated steel	Brass	Stainless steel AISI 303	Stainless steel AISI 316
Valve	Stainless steel AISI 303	Stainless steel AISI 303	Stainless steel AISI 303	Stainless steel AISI 316
Washer	Stainless steel AISI 304	Stainless steel AISI 304	Stainless steel AISI 304	Stainless steel AISI 304
Seal	NBR, Viton,EPDM,Silicon	NBR, Viton,EPDM,Silicon	NBR, Viton,EPDM,Silicon	NBR, Viton,EPDM,Silicon
Spring	Stainless steel AISI 302	Stainless steel AISI 302	Stainless steel AISI 302	Stainless steel AISI 302
Clip	Stainless steel AISI 301	Stainless steel AISI 301	Stainless steel AISI 301	Stainless steel AISI 301
CONNECTION	ACD-100	ACD-100-L	ACD-100-X	ACD-100-X-316
Body	Nickel-plated steel	Brass	Stainless steel AISI 303	Stainless steel AISI 316

FLOW DROP



All charts have been created
considering a pressure of 6 Bar
with low drop of 0.5 bar and
simple lock



CD-100

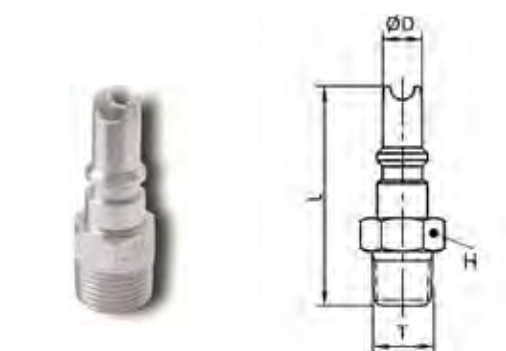
Female quick coupler BSPP, DN 10,5



CODE	T	P	C	L	H
CD-100	G1/2"	33,5	31	61	27
CD-100-PL	G1/2"	33,5	31	61	27
CD-100-L	G1/2"	33,5	31	61	27
CD-100-L-PL	G1/2"	33,5	31	61	27
CD-100-X	G1/2"	33,5	31	61	27
CD-100-X-PL	G1/2"	33,5	31	61	27
CD-100-X-316	G1/2"	33,5	31	61	27
CD-100-X-316-PL	G1/2"	33,5	31	61	27

ACD-100M

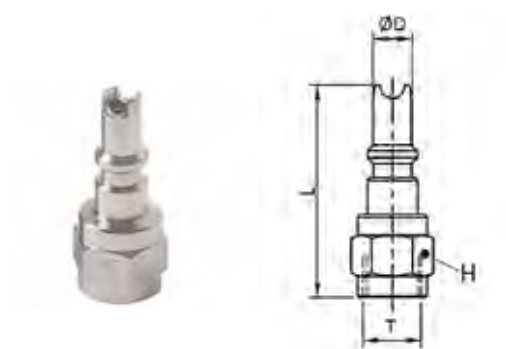
Male quick coupler BSPT, DN 10,5



CODE	T	D	L	H
ACD-100M	R1/2"	14,3	55	22
ACD-100M-L	R1/2"	14,3	55	22
ACD-100M-X	R1/2"	14,3	55	22

ACD-100H

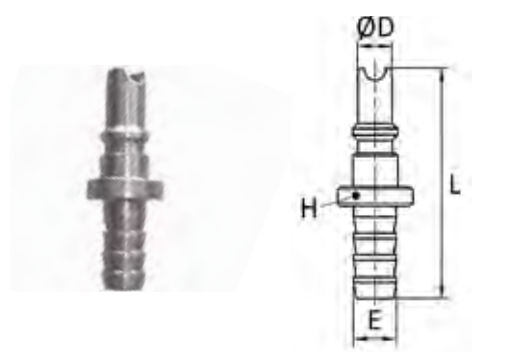
Female quick coupler BSPP, DN 10,5



CODE	T	D	L	H
ACD-100H	G1/2"	14,3	58	27
ACD-100H-L	G1/2"	14,3	58	27
ACD-100H-X	G1/2"	14,3	58	27
ACD-100H-X-316	G1/2"	14,3	58	27

ACD-100E

Connection with barb connector, DN 10,5



CODE	E	D	L	H
ACD-100E-10	11,2	14,3	60,0	25
ACD-100E-10-L	11,2	14,3	60,0	25
ACD-100E-10X	11,2	14,3	60,0	25
ACD-100E-12X	13,2	14,3	60,0	25
ACD-100E	15,2	14,3	65,0	25
ACD-100E-L	15,2	14,3	65,0	25
ACD-100E-X	15,2	14,3	65,0	25

