

# **QUICK COUPLING FOR FLUIDS**

## **CD-150**

### **PLUS**

**DIFFERENT MATERIALS  
FOR EVERY KIND OF APPLICATION**

**ARE INDICATED IN OXIDANT  
AND CORROSIVE ENVIROMENTS  
WITH VERSION IN AISI 316**

**EASY HANDLING  
AND CONNECTION/DISCONNECTION**

**AVAILABLE WITH FREE PASSAGE,  
SINGLE INTERCEPTED  
AND DOUBLE INTERCEPTED**





p. 480 / **CD-150**



p. 480 / **ACD-150M**

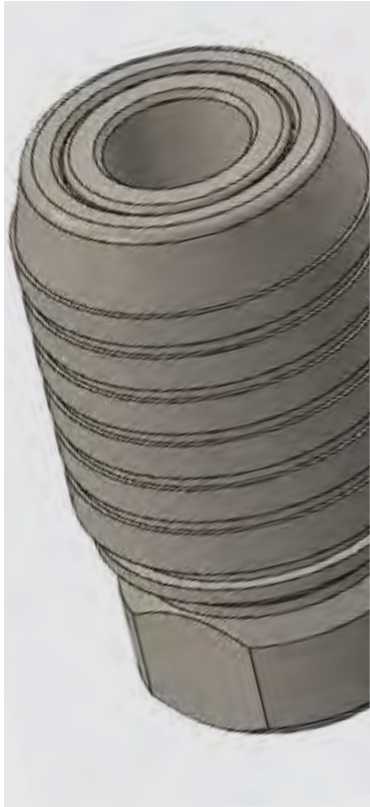


p. 480 / **ACD-150H**



p. 481 / **ACD-150E**





From -10°C to +95°C with NBR seal  
 From -15°C to +200°C with VITON seal  
 From -40°C to +95°C with EPDM seal  
 From -60°C to +200°C with SILICONE seal



**Suggest:** from 0 to 12 Bar  
**Max:** 35 Bar



Air, water, gas, vacuum, mineral and synthetic acids (not aggressive for the brass version) and fluids suitable with construction materials



Taper BSPT from 3/4" to 1"  
 Parallel BSPP from 3/4" to 1"

**FLOW**

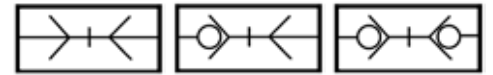
3100 l/min



14 mm

**CONFIGURATIONS**

PL, SO e DO



REACH

Products in compliance with the directive 2002/95/EC

**RoHS2**

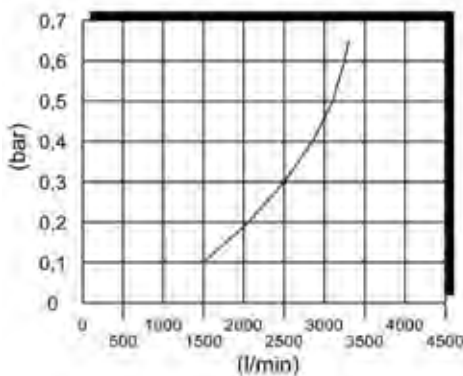
Products in compliance with the directive 2011/65/EU



COMPONENTS	CD-150-L	CD-150-X	CD-150-X-316
Body	Brass	Stainless steel AISI 303	Stainless steel AISI 316L
Slide	Brass	Stainless steel AISI 303	Stainless steel AISI 316L
Valve	Stainless steel AISI 303	Stainless steel AISI 303	Stainless steel AISI 316L
Washer	Stainless steel AISI 304	Stainless steel AISI 304	Stainless steel AISI 304
Seal	NBR, Viton, EPDM, Silicon	NBR, Viton, EPDM, Silicon	NBR, Viton, EPDM, Silicon
Clip	Stainless steel AISI 302	Stainless steel AISI 302	Stainless steel AISI 302
Spring	Stainless steel AISI 301	Stainless steel AISI 301	Stainless steel AISI 301

CONNECTION	ACD-150-L	ACD-150-X	ACD-150-X-316
Body	Brass	Stainless steel AISI 303	Stainless steel AISI 316L

**FLOW DROP**

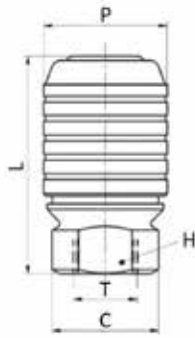


All charts have been created considering a pressure of 6 Bar with low drop of 0.5 bar and simple lock.



**CD-150**

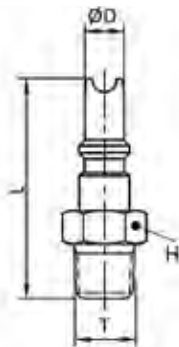
Female quick coupler BSPP, DN 14



CODE	T	P	C	L	H
CD-150-L	G3/4"	44	40	85,7	34
CD-150-L-PL	G3/4"	44	40	85,7	34
CD-150-L-P	G1"	44	40	85,7	34
CD-150-L-P-PL	G1"	44	40	85,7	34
CD-150-X	G3/4"	44	40	85,7	34
CD-150-X-PL	G3/4"	44	40	85,7	34
CD-150-X-316	G3/4"	44	40	85,7	34
CD-150-X-L-P	G1"	44	42	92,7	38
CD-150-X-P	G1"	44	42	92,7	38
CD-150-X-P-PL	G1"	44	42	92,7	38
CD-150-X-316-P	G1"	44	42	92,7	38
CD-150-X-316-P-PL	G1"	44	42	92,7	38

**ACD-150M**

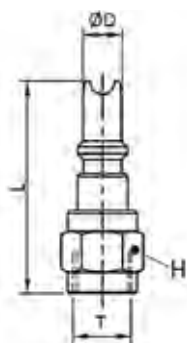
Male connection BSPT, DN 14



CODE	T	D	H	L
ACD-150M-L	R3/4"	19	27	74,7
ACD-150M-X	R3/4"	19	27	74,7
ACD-150M-X-316	R3/4"	19	27	74,7
ACD-150M-L-P	R1"	19	36	79,7
ACD-150M-X-P	R1"	19	36	79,7
ACD-150M-X-316-P	R1"	19	36	79,7

**ACD-150H**

Female connection BSPP, DN 14

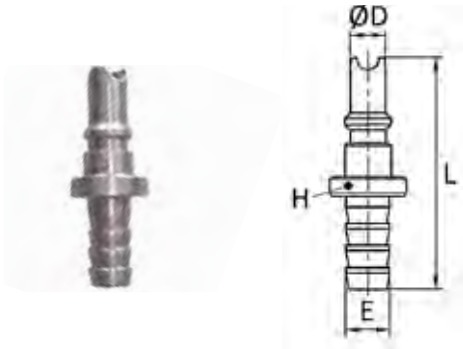


CODE	T	D	L	H
ACD-150H-L	G3/4"	19	76,7	32
ACD-150H-X	G3/4"	19	76,7	32
ACD-150H-X-316	G3/4"	19	76,7	32
ACD-150H-L-P	G1"	19	78,7	40
ACD-150H-X-P	G1"	19	78,7	41
ACD-150H-X-316-P	G1"	19	78,7	41



**ACD-150E**

Connection with barb connector, DN 14



CODE	E	D	L	H
ACD-150E-L	21	19	89,7	32
ACD-150E-X	21	19	89,7	32
ACD-150E-X-316	21	19	89,7	32



