

QUICK COUPLING FOR FLUIDS

CD-25

PLUS

**DIFFERENT MATERIALS
FOR EVERY KIND OF APPLICATION**

**ARE INDICATED IN OXIDANT
AND CORROSIVE ENVIROMENTS
WITH VERSION IN AISI 303**

**EASY HANDLING
AND CONNECTION/DISCONNECTION**

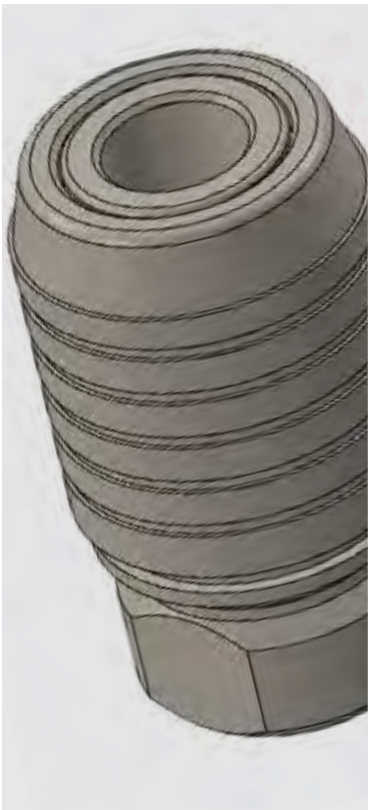
**AVAILABLE WITH FREE PASSAGE,
SINGLE INTERCEPTED
AND DOUBLE INTERCEPTED**





p. 462 / **CD-25**





From -10°C to +95°C
with NBR seal
From -15°C to +200°C
with VITON seal
From -40°C to +95°C
with EPDM seal
From -60°C to +200°C
with SILICONE seal



Suggest: from 0 to 12 Bar
Max: 35 Bar



Air, water, gas, vacuum, mineral
and synthetic acids (not aggressive
for the brass version) and fluids
suitable with construction materials

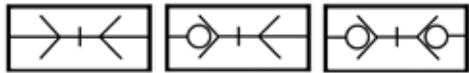


Parallel BSPP
from G1/4" to G3/8"

FLOW
636 l/min

DN 5,2 mm

CONFIGURATIONS
PL, SO or DO



Products in compliance with
the directive 2002/95/EC

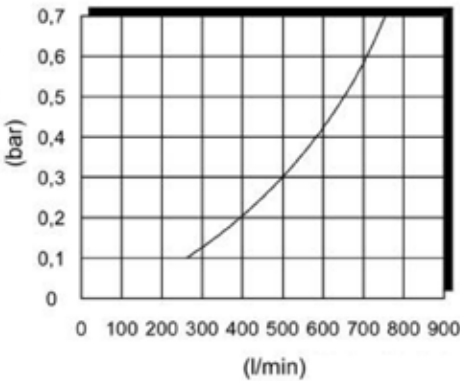
RoHS2

Products in compliance with
the directive 2011/65/EU



COMPONENTS	CD-25	CD-25-L	CD-25-X
Body	Nickel-plated steel	Brass	Stainless steel AISI 303
Slide	Nickel-plated steel	Brass	Stainless steel AISI 303
Valve	Stainless steel AISI 303	Stainless steel AISI 303	Stainless steel AISI 303
Seal	NBR, Viton,EPDM,Silicon	NBR, Viton,EPDM,Silicon	NBR, Viton,EPDM,Silicon
Washer	Stainless steel AISI 304	Stainless steel AISI 304	Stainless steel AISI 304
Clip	Stainless steel AISI 301	Stainless steel AISI 301	Stainless steel AISI 301
Spring	Stainless steel AISI 302	Stainless steel AISI 302	Stainless steel AISI 302

FLOW DROP



CD-25

Female quick coupler BSPP, DN 5,2



CODE	T	P	C	L	H
CD-25	G1/4"	25,5	22	45	19
CD-25-PL	G1/4"	25,5	22	45	19
CD-25-L	G1/4"	25,5	22	45	19
CD-25-L-PL	G1/4"	25,5	22	45	19
CD-25-X	G1/4"	25,5	22	45	19
CD-25-X-PL	G1/4"	25,5	22	45	19
CD-25-3/8	G3/8"	25,5	22	45	19
CD-25-3/8-PL	G3/8"	25,5	22	45	19
CD-25-3/8X	G3/8"	25,5	22	45	19
CD-25-3/8X-PL	G3/8"	25,5	22	45	19

