

QUICK COUPLING FOR FLUIDS

FLUID-10N
FLUID-10S

PLUS

**DIFFERENT RANGES WITH SECURITY
SYSTEM AND ANTI-WHIPLASH,
IN CONFORMITY WITH SAFETY
STANDARDS**

**EASY HANDLING
AND CONNECTION/DISCONNECTION**

**AVAILABLE WITH FREE PASSAGE,
SINGLE INTERCEPTED**





p. 490 /
FLUID-10N-M



p. 490 /
FLUID-10N-H



p. 490 /
FLUID-10N-E



p. 490 /
FLUID-10N-PM



p. 491 /
FLUID-10S-M



p. 491 /
FLUID-10S-H



p. 491 /
FLUID-10S-E



p. 491 /
FLUID-10S-PM



p. 492 / **NE-10M**



p. 492 / **NE-10H**



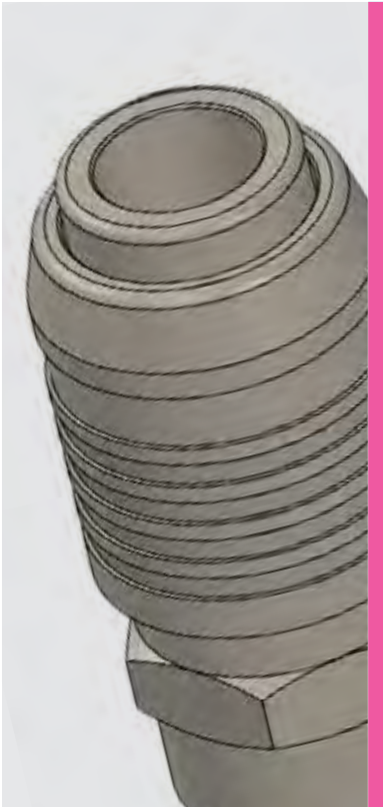
p. 492 / **NE-10E**



p. 492 / **NE-10PM**



ISO 6150 B12



From -20°C to +100°C



Suggest: From 0 to 12 Bar
From 0 to 7 Bar for **SAFETY** version
Max: 35 Bar



Air and not aggressive and not oxidant fluids suitable with construction materials



Taper BSPT from R1/4" to R1/2"
Parallel BSPP from G1/4" to G1/2"

FLOW

750 l/min
840 l/min for **SAFETY** version



5,5 mm

CONFIGURATIONS

PL , SO



Products in compliance with the directive 2002/95/EC

RoHS2

Products in compliance with the directive 2011/65/EU

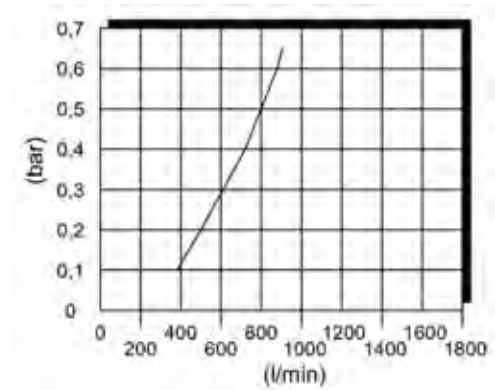


COMPONENTS	FLUID-10N	FLUID-10S
Body	Nickel-plated steel	Nickel-plated steel
Adapter	Nickel-plated steel	Nickel-plated steel
Slide	Nickel-plated steel	Nickel-plated steel
Valve	Nickel-plated steel	Nickel-plated steel
External cartridges	-	Nickel-plated steel
Seal	NBR	NBR
Spring	Stainless steel AISI 302	Stainless steel AISI 302
Ball	Chrome steel	Chrome steel
Retaining ring	Stainless steel AISI 302	Stainless steel AISI 302
CONNECTION	NE-10	
Body	Nickel-plated steel	

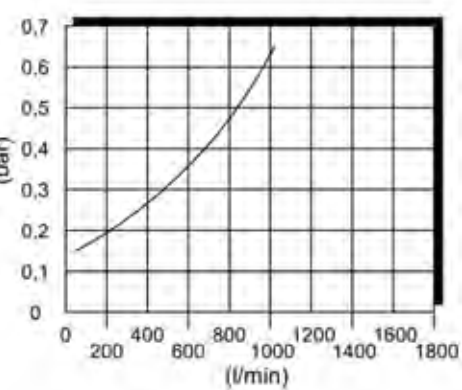
FEATURES

Quick coupling system in compliance with the safety standard ISO 4414 and UNI-EN 983-1996. The disconnection phase is divided in two steps: in the first step the air is downloaded downstream, in the second step the coupling is mechanically disconnected from the connector avoiding dangerous accidental disconnections. This system has been studied in order to increase safety at work by downloading the air. Not suitable for direct connection to pneumatic devices. We recommend to use a tube of at least 30 cm length to absorb the device vibrations.

FLOW DROP FLUID-10N



FLOW DROP FLUID-10S



All charts have been created considering a pressure of 6 Bar with low drop of 0.5 bar and simple lock



FLUID-10N-M

Male quick coupler DN 5,5



CODE	T	P	L	C	H
FLUID-10N-M1/4	R1/4"	23,4	54,5	19,0	17
FLUID-10N-M3/8	R3/8"	23,4	55,5	19,0	17
FLUID-10N-M1/2	R1/2"	23,4	60,0	24,6	22
FLUID-10N-M1/2G	G1/2"	23,4	57,5	26,5	24

FLUID-10N-H

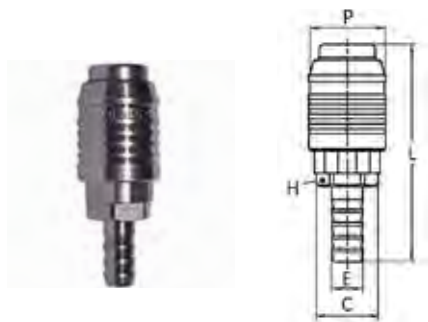
Female quick coupler DN 5,5



CODE	T	P	L	C	H
FLUID-10N-H1/4	G1/4"	23,4	52,5	21,5	19
FLUID-10N-H3/8	G3/8"	23,4	54,0	24,6	22
FLUID-10N-H1/2	G1/2"	23,4	58,2	27,5	25

FLUID-10N-E

Quick coupler with barb connector DN 5,5



CODE	E	P	L	C	H
FLUID-10N-E6	7,20	23,4	62,0	21,5	19
FLUID-10N-E8	9,20	23,4	62,0	21,5	19
FLUID-10N-E10	11,20	23,4	66,0	21,5	19
FLUID-10N-E12	13,20	23,4	71,0	21,5	19
FLUID-10N-E13	13,80	23,4	71,0	21,5	19

FLUID-10N-PM

Joint push-on fittings DN 5,5



CODE	Ø TUBE	P	R	ØD	L	H
FLUID-10N-PM08	8X12	23,4	M16X1	21,3	64,7	19
FLUID-10N-PM10	10X15	23,4	M20X1	24,3	69,5	22

To used with PU-PVC



FLUID-10S-M

Safety male quick coupler DN 5,5



CODE	T	P	L	C	H
FLUID-10S-M1/4	R1/4"	25,6	55,7	19,0	17
FLUID-10S-M3/8	R3/8"	25,6	56,7	19,0	17
FLUID-10S-M1/2	R1/2"	25,6	61,2	24,6	22
FLUID-10S-M1/2G	G1/2"	26,6	61,2	24,6	24

FLUID-10S-H

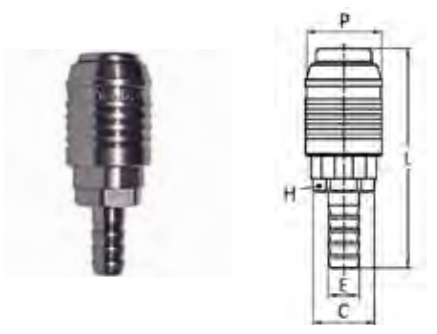
Safety female quick coupler DN 5,5



CODE	T	P	L	C	H
FLUID-10S-H1/4	G1/4"	25,6	53,7	21,5	19
FLUID-10S-H3/8	G3/8"	25,6	55,2	24,6	22
FLUID-10S-H1/2	G1/2"	25,6	59,4	27,5	25

FLUID-10S-E

Safety quick coupler with barb connector DN 5,5



CODE	E	P	L	C	H
FLUID-10S-E6	7,2	26,6	63,2	21,5	19
FLUID-10S-E8	9,2	25,6	63,2	19	17
FLUID-10S-E10	11,2	25,6	67,2	19	17
FLUID-10S-E12	13,2	26,6	72,2	21,5	19
FLUID-10S-E13	13,8	26,6	72,2	21,5	19

FLUID-10S-PM

Safety joint push-on fitting DN 5,5



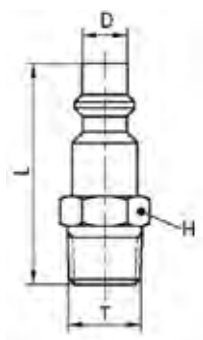
CODE	Ø TUBE	ØD	R	ØP	L	H
FLUID-10S-PM08	8X12	21,3	M16X1	26,6	64,7	19
FLUID-10S-PM10	10X15	24,3	M20X1	26,6	69,5	22

To used with PU-PVC



NE-10M

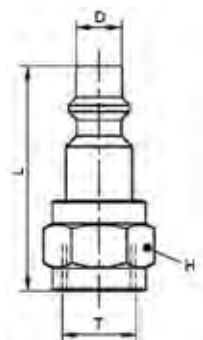
Male connection BSPT DN 5,5



CODE	T	D	L	H
NE-10M	R1/4"	8	40,0	14
NE-10M-3/8	R3/8"	8	42,5	17
NE-10M-1/2	R1/2"	8	46,0	22

NE-10H

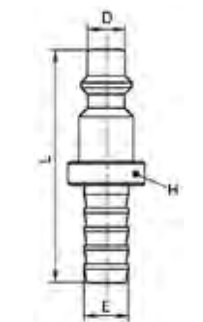
Female connection BSPP DN 5,5



CODE	T	D	L	H
NE-10H	G1/4"	8	40,0	17
NE-10H-3/8	G3/8"	8	41,5	22
NE-10H-1/2	G1/2"	8	44,0	25

NE-10E

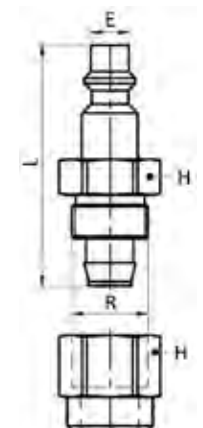
Connection with barb connector DN 5,5



CODE	E	D	L	H
NE-10E-6	7,2	8	46	14
NE-10E-8	9,2	8	47	14
NE-10E-10	11,2	8	52	14
NE-10E-12	13,2	8	54	15

NE-10PM

Connection with push-on fitting DN 5,5



CODE	Ø TUBE	R	E	L	H
NE-10PM-08	8X12	M16X1	8	50,7	19
NE-10PM-10	10X15	M20X1	8	55,5	22

To used with PU-PVC

