

# **QUICK COUPLING FOR FLUIDS**

## **FLUID-20N**

**PLUS**

**EASY HANDLING  
AND CONNECTION/DISCONNECTION**

---

**AVAILABLE WITH SINGLE INTERCEPTED**





p. 502 /  
**FLUID-20N-M**



p. 502 /  
**FLUID-20N-H**



p.502 /  
**FLUID-20N-E**



p. 502 / **NE-20M**

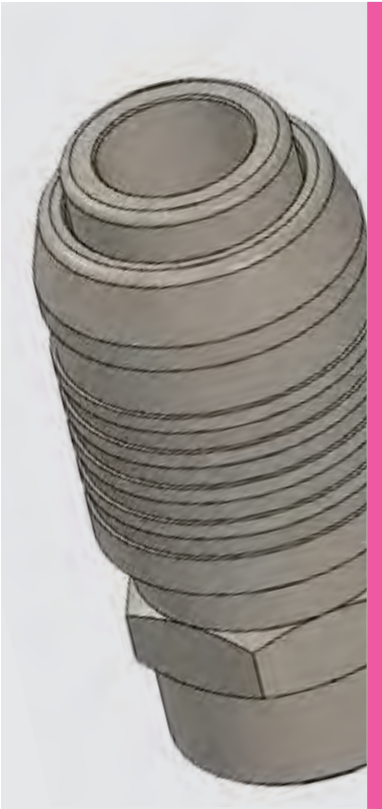


p. 503 / **NE-20H**



p. 503 / **NE-20E**

ISO 6150-B-15 PROFILE



From -20°C to +100°C



**Suggest:** From 0 to 12 Bar  
**Max:** 35 Bar



Air and not aggressive and not oxidant fluids suitable with construction materials

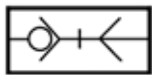


Taper BSPT from R1/4" to R1/2"  
Parallel BSPP from G3/8" to G1/2"

**FLOW**  
1500 l/min

**DN** 8 mm

**CONFIGURATIONS**  
SO



Products in compliance with the directive 2002/95/EC

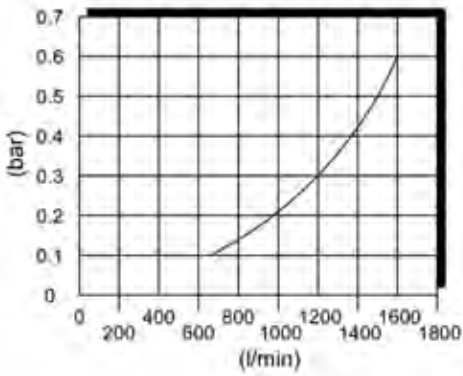
**RoHS2**

Products in compliance with the directive 2011/65/EU



COMPONENTS	FLUID-20N
Body	Nickel-plated steel
Adapter	Nickel-plated brass
Slide	Nickel-plated steel
Valve	Nickel-plated brass
Seal	NBR
Spring	Stainless steel AISI 302
Ball	Chrome steel
Retaining ring	Stainless steel AISI 302
CONNECTION	NE-20
Body	Nickel-plated steel

FLOW DROP



All charts have been created considering a pressure of 6 Bar with low drop of 0.5 bar and simple lock



## FLUID-20N-M

Male quick coupler DN 8



CODE	T	P	L	C	H
FLUID-20N-M3/8	R3/8"	27,6	59,5	23,2	21
FLUID-20N-M1/2	R1/2"	27,6	63,0	24,7	22

## FLUID-20N-H

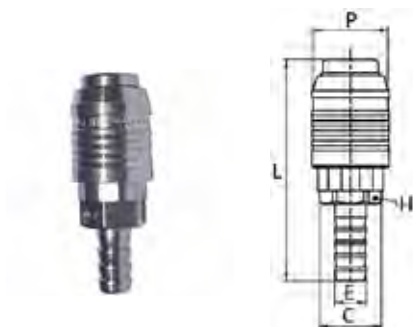
Female quick coupler DN 8



CODE	T	P	L	C	H
FLUID-20N-H3/8	R3/8"	27,6	59	24,7	22
FLUID-20N-H1/2	R1/2"	27,6	59	28,2	25

## FLUID-20N-E

Quick coupler with barb connector DN 8



CODE	E	P	L	C	H
FLUID-20N-E10	11,2	27,6	73	23,2	21
FLUID-20N-E12	13,2	27,6	75	23,2	21

## NE-20M

Male connection DN 8

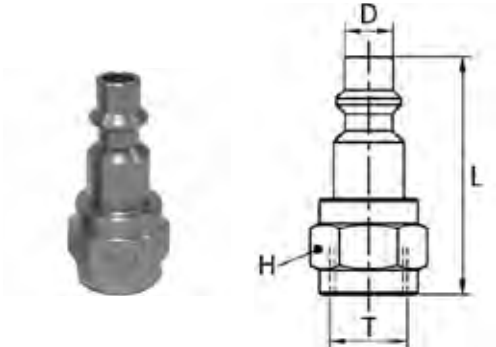


CODE	T	D	L	H
NE-20M-1/4	R1/4"	10,9	44,1	17
NE-20M	R3/8"	10,9	45,1	17
NE-20M-1/2	R1/2"	10,9	48,1	22



NE-20H

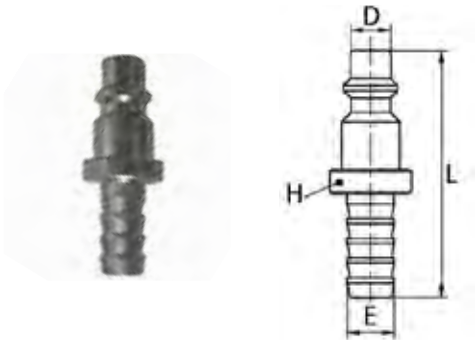
Female connection DN 8



CODE	T	D	L	H
NE-20H	G3/8"	10,8	42,6	22
NE-20H-1/2	G1/2"	10,8	47,6	27

NE-20E

Connection with barb connector DN 8



CODE	E	D	L	H
NE-20E	11,2	10,8	54,1	20
NE-20E-13	14,2	10,8	59,1	20



