

QUICK COUPLING FOR FLUIDS

CRM-55

PLUS

**EASY HANDLING
AND CONNECTION/DISCONNECTION**

**AVAILABLE WITH FREE PASSAGE,
SINGLE INTERCEPTED**





p. 568 /
CRM-55-M



p. 568 / **CRM-55**



p. 568 /
CRM-55-E



p. 568 /
ACRM-55-M

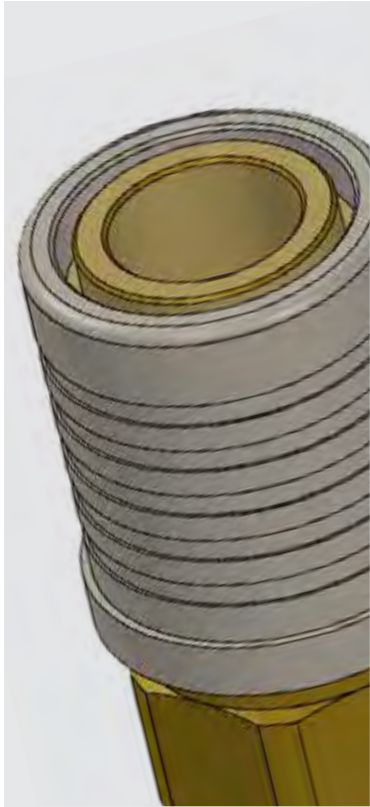


p. 569 /
ACRM-55-H



p. 569 /
ACRM-55-E





From -20°C to +100°C with NBR seal
From -20°C to +205° with VITON seal



Max: 35 Bar



DN 8,5 mm



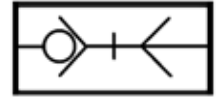
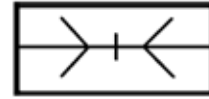
Taper BSPT from R1/8" to R1/2"
Parallel BSPP from G1/8" to G1/2"

FLOW

1.135 l/min

CONFIGURATIONS

PL e SO



Products in compliance with the directive 2002/95/EC

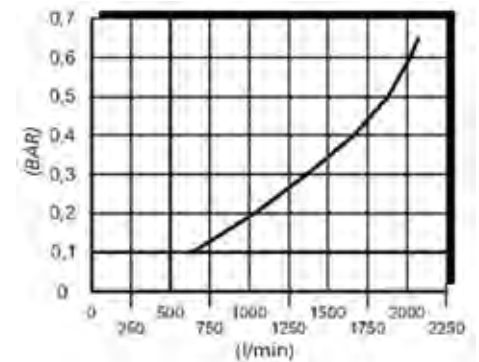
RoHS2

Products in compliance with the directive 2011/65/EU

FEATURES

The couplings CRM-55 serie are mainly used in the process of cooling of injection molds. In spite of the reduced dimensions, they're solidly built and they can reach a very high flow. All the connectors in stainless steel are submitted to nickel-plating covering process in order to make them more durable.

FLOW DROP



All charts have been created considering a pressure of 6 Bar with low drop of 0.5 bar and simple lock

COMPONENTS	CRM
Body	Brass
Adapter	Brass
Slide	Nickel-plated steel
Valve	Brass
Valve seat	Brass
Support seal	Brass
Seal	NBR, VITON
Spring	Stainless steel AISI 302
Ball	Stainless steel AISI 420
Retaining ring	Stainless steel AISI 302
Clip	Stainless steel AISI 304

CONNECTION	ACRM-L	ACRM	ACRM-X
Body	Brass	Nickel-plated steel	Stainless steel AISI 303



CRM-55-M

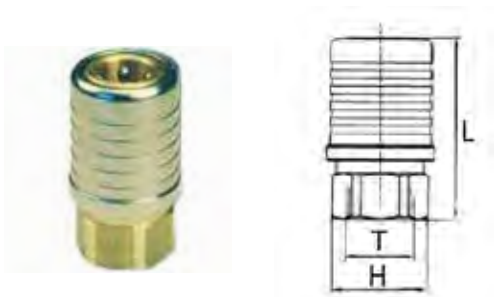
Male quick coupler DN 8,5



CODE	T	L	H
CRM-55-3/8-M	R3/8"	57,6	22
CRM-55-3/8-PL-M	R3/8"	57,6	22
CRM-55-1/2-M	R1/2"	61,1	22
CRM-55-1/2-PL-M	R1/2"	61,1	22

CRM-55

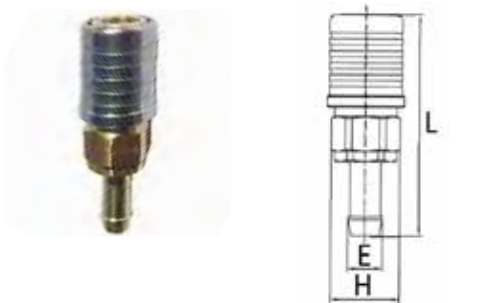
Female quick coupler DN 8,5



CODE	T	L	H
CRM-55-3/8	G3/8"	46	22
CRM-55-3/8-PL	G3/8"	46	22

CRM-55-E

Quick coupler with barb connector DN 8,5



CODE	E	L	H
CRM-55-E	10	74,5	22
CRM-55-PL-E	10	74,5	22

ACRM-55-M

Male connection DN 8,5

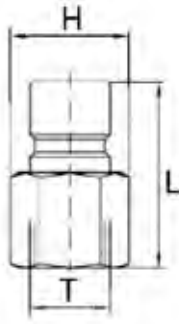


CODE	T	L	H
ACRM-55M1	R1/8"	30,3	17
ACRM-55M1-L	R1/8"	30,3	17
ACRM-55M	R1/4"	31,8	17
ACRM-55M-L	R1/4"	31,8	17
ACRM-55M-X	R1/4"	31,8	17
ACRM-55M-3/8	R3/8"	32,8	17



ACRM-55-H

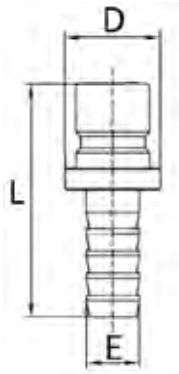
Female connection DN 8,5



CODE	T	L	H
ACRM-55H1	G1/8"	31,3	17
ACRM-55H1-L	G1/8"	31,3	17
ACRM-55H	G1/4"	31,3	17
ACRM-55H-L	G1/4"	31,3	17
ACRM-55H-X	G1/4"	31,3	17
ACRM-55H-3/8	G3/8"	35,3	22

ACRM-55-E

Connection with barb connector DN 8,5



CODE	E	L	D
ACRM-55-E8	9,2	38,3	17



