

RACCORDI A FUNZIONE RACCORDI DI ARRESTO

PLUS

**IDEALI PER LA MANUTENZIONE
PERIODICA DEGLI IMPIANTI**

**MIGLIORANO LA SICUREZZA DEL
SISTEMA**

**DIMENSIONI COMPATTE E AMPIA
SCELTA DI FIGURE**

**CHIUDONO IL CIRCUITO QUANDO
IL TUBO È SCOLLEGATO**





p. 402 / **SPC-R**



p. 402 / **SPC-G**



p. 402 / **SPUM**



p. 403 / **SPL-R**

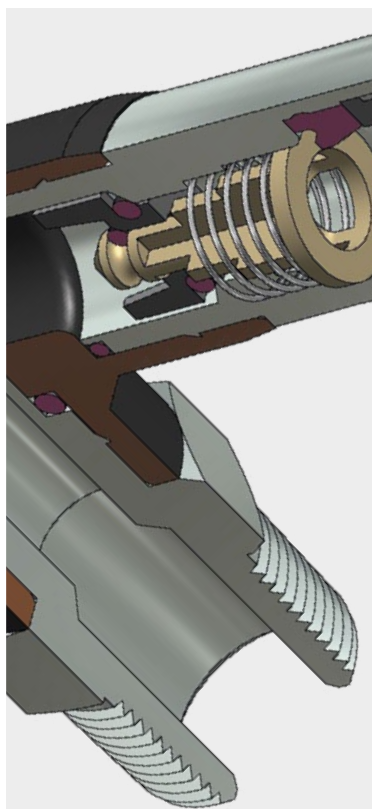


p. 403 / **SPL-G**



p. 403 / **SPU**





0°C ÷ 60°C



Pressione d'esercizio:
da 0 a 10 Bar



Aria compressa



- Conica gas BSPT ISO 7 da R1/8" a R1/2" teflonato
- Cilindrica gas BSPP ISO 228 con o-ring da G1/8" a G1/2"
- Metrica ISO 262 M5 e M6



Poliammide PA, poliuretano PU

Corpo: Ottone nichelato e PBT

Colletto: POM

Collare: Zinco



Pinza: Acciaio inox AISI 301

Distanziale: POM

Guarnizione: NBR

Molla: Acciaio inox AISI 301

Valvola: POM

SILICONE FREE

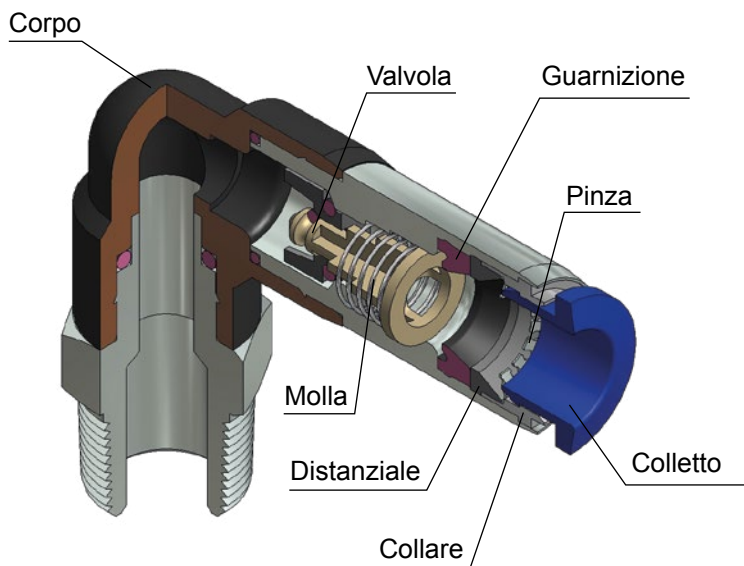


Prodotti conformi al regolamento CE 1907/2006

RoHS3

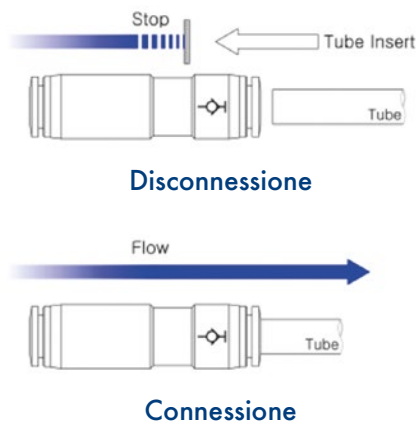
Prodotti conformi alla direttiva EU 2015/863

DETTAGLI COSTRUTTIVI



RACCORDI DI ARRESTO

I raccordi di arresto sono realizzati per facilitare le operazioni di manutenzione. Arrestano il passaggio del fluido quando viene scollegato al tubo e, una volta collegato nuovamente, ristabiliscono il passaggio del fluido in senso bidirezionale.



COPPIA DI SERRAGGIO CONICA GAS BSPT ISO 7

FILETTO	1/8"	1/4"	3/8"	1/2"
Nm	7	12	22	28

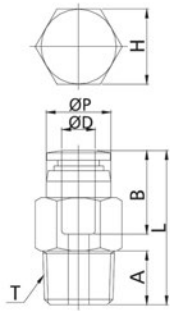
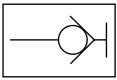
COPPIA DI SERRAGGIO CILINDRICA GAS BSPP ISO 228 & METRICA ISO 262

FILETTO	M5x0,8	M6x1	1/8"	1/4"	3/8"	1/2"
Nm	1,5	2,3	10	15	25	40



SPC-R

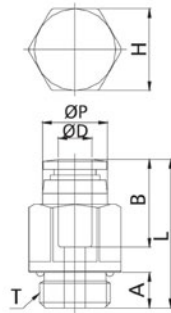
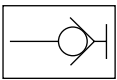
Raccordo di arresto diritto maschio conico BSPT



CODICE	ØD	T	ØP	L	A	B	H	g
SPC04R01	4	R 1/8"	10,0	26,1	8,0	15,3	10	10,0
SPC06R01	6	R 1/8"	12,0	28,7	8,0	16,9	12	13,0
SPC06R02		R 1/4"	12,0	28,7	10,0	16,9	14	20,0
SPC08R02	8	R 1/4"	14,0	33,3	10,0	18,6	14	20,0
SPC08R03		R 3/8"	14,0	33,3	11,0	18,6	17	36,0
SPC10R02	10	R 1/4"	17,0	36,4	10,0	20,3	17	48,0
SPC10R03		R 3/8"	17,0	37,6	11,0	20,3	17	36,0
SPC10R04		R 1/2"	17,0	38,4	14,0	20,3	21	60,0
SPC12R02	12	R 1/4"	19,0	44,7	10,0	22,6	19	48,0
SPC12R03		R 3/8"	19,0	44,6	11,0	22,6	19	49,0
SPC12R04		R 1/2"	19,0	44,6	14,0	22,6	21	64,0

SPC-G

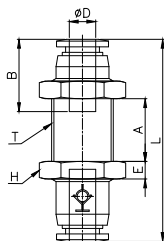
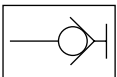
Raccordo di arresto diritto maschio cilindrico BSPP



CODICE	ØD	T	ØP	L	A	B	H	g
SPC04G01	4	G 1/8"	10,3	25,5	5,0	15,3	12	10,0
SPC06G01	6	G 1/8"	12,0	27,7	5,0	16,9	12	13,0
SPC06G02		G 1/4"	12,0	27,2	6,5	16,9	15	20,0
SPC08G02	8	G 1/4"	14,0	31,9	6,5	18,6	15	20,0
SPC08G03		G 3/8"	14,0	31,9	6,5	18,6	17	36,0
SPC10G02	10	G 1/4"	17,0	34,9	6,5	20,3	17	48,0
SPC10G03		G 3/8"	17,0	36,4	6,5	20,3	17	36,0
SPC10G04		G 1/2"	17,0	37,4	8,0	20,3	21	60,0
SPC12G02	12	G 1/4"	19,0	43,2	6,5	22,6	19	48,0
SPC12G03		G 3/8"	19,0	43,2	6,5	22,6	21	49,0
SPC12G04		G 1/2"	19,0	43,7	8,0	22,6	21	64,0

SPUM

Raccordo di arresto passaparte

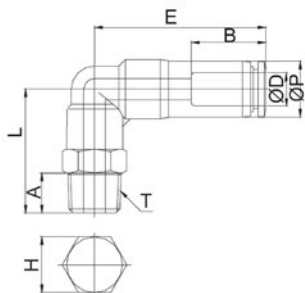
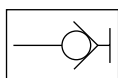


CODICE	ØD	T	L	E	A MAX	B	H	g
SPUM04	4	M12x1	40,9	4	12,1	14,8	14	22,4
SPUM06	6	M14x1	45,9	4	14,1	16,4	17	32,2
SPUM08	8	M16x1	53,2	5	18,5	18,5	19	48,9
SPUM10	10	M20x1	58,6	5	20,8	20,3	24	81,2
SPUM12	12	M22x1	67,6	5	26,6	22,6	26	



SPL-R

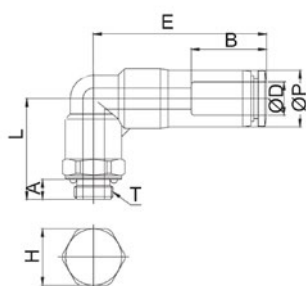
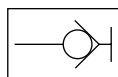
Raccordo di arresto gomito maschio conico BSPT



CODICE	ØD	T	ØP	L	E	A	B	H	g
SPL04R01	4	R 1/8"	10,0	24,5	29,5	8,0	14,8	10	15,0
SPL06R01	6	R 1/8"	12,0	26,5	32,8	8,0	16,4	12	22,0
SPL06R02		R 1/4"	12,0	29,5	32,8	10,0	16,4	14	27,0
SPL08R01	8	R 1/8"	14,0	28,0	42,9	8,0	18,4	14	32,0
SPL08R02		R 1/4"	14,0	31,0	42,9	10,0	18,4	14	38,0
SPL08R03		R 3/8"	14,0	32,0	42,9	11,0	18,4	17	44,0
SPL10R02	10	R 1/4"	17,0	31,5	49,0	10,0	20,2	17	57,0
SPL10R03		R 3/8"	17,0	32,5	49,0	11,0	20,2	17	64,0
SPL10R04		R 1/2"	17,0	35,5	49,0	14,0	20,2	21	80,0
SPL12R03	12	R 3/8"	19,0	35,4	57,5	11,0	22,4	19	78,0
SPL12R04		R 1/2"	19,0	38,4	57,5	14,0	22,4	21	91,0

SPL-G

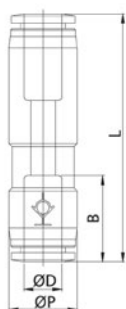
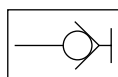
Raccordo di arresto a gomito maschio cilindrico BSPP & metrico



CODICE	ØD	T	ØP	L	E	A	B	H	g
SPL04M5	4	M5x0,8	10,0	20,5	29,5	4,0	14,8	10	13,0
SPL04M6		M6x1,0	10,0	20,6	29,5	4,1	14,8	10	14,0
SPL04G01		G 1/8"	10,0	21,5	29,5	5,0	14,8	14	15,0
SPL06M5	6	M5x0,8	12,0	22,5	32,8	4,0	16,4	12	19,0
SPL06G01		G 1/8"	12,0	23,5	32,8	5,0	16,4	14	22,0
SPL06G02		G 1/4"	12,0	25,5	32,8	6,5	16,4	17	27,0
SPL08G02	8	G 1/4"	14,0	27,0	42,9	6,5	18,4	17	38,0
SPL08G03		G 3/8"	14,0	26,5	42,9	6,5	18,4	20	44,0
SPL10G02	10	G 1/4"	17,0	27,5	49,0	6,5	20,2	17	57,0
SPL10G03		G 3/8"	17,0	27,0	49,0	6,5	20,2	20	64,0
SPL10G04		G 1/2"	17,0	28,5	49,0	8,0	20,2	24	80,0
SPL12G03	12	G 3/8"	19,0	29,9	57,5	6,5	22,4	20	78,0
SPL12G04		G 1/2"	19,0	31,4	57,5	8,0	22,4	24	91,0

SPU

Raccordo di arresto intermedio diritto



CODICE	ØD	ØP	L	B	g
SPU04	4	10,5	41,7	16,2	5,0
SPU06	6	12,5	45,9	17,4	8,0
SPU08	8	14,8	52,8	18,9	11,0
SPU10	10	17,5	58,3	20,4	19,0
SPU12	12	20,5	67,1	23,0	30,0

