

RACCORDI PORTAGOMMA OTTONE

PLUS

**IDONEI ALL'UTILIZZO CON ARIA
COMPRESSA E FLUIDI INDUSTRIALI**

**AMPIA GAMMA DISPONIBILE PER
SODDISFARE MOLTEPLICI ESIGENZE**

**PROGETTATI PER GARANTIRE UNA
BUONA RESISTENZA MECCANICA**

**UTILIZZABILI CON MOLTEPLICI TUBI
PLASTICI E IN GOMMA**

**DA UTILIZZARE CON FASCETTE IN
ACCIAIO ZINCATO PER ASSICURARE
IN MODO EFFICACE IL TUBO**





p. 228 / **1165**



p. 228 / **1167**



p. 229 / **1169**



p. 230 / **1170**



p. 230 / **1171**



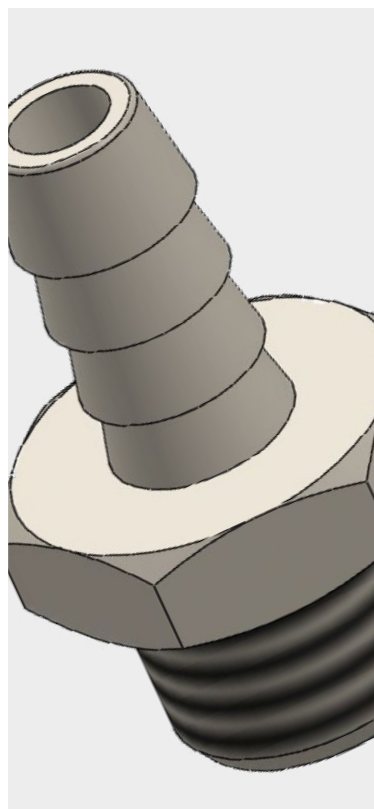
p. 231 / **1174**



p. 231 / **1172**



p. 231 / **1173**



-20°C ÷ 100°C con o-ring in NBR
-15°C ÷ 200°C con o-ring in Viton
La temperatura d'esercizio è determinata dalle caratteristiche del tubo utilizzato



Pressione d'esercizio:

18 Bar
60 Bar (massima)
La pressione d'esercizio è determinata dalle caratteristiche del tubo utilizzato



Aria compressa, acqua e fluidi compatibili con i materiali costruttivi



- Conica gas BSPT ISO 7 da R1/8" a R1"
- Cilindrica gas BSPP ISO 228 da G1/8" a G3/4"
- Metrica ISO 262 M5



Tutti i tubi compatibili con il diametro interno, utilizzabili rigorosamente con fascette adeguate



Corpo: Ottone nichelato

Tornito: UNI EN 12164 CW 614N

Stampato: UNI EN 12165 CW 617N

O-ring: NBR 70

DISPONIBILITÀ:

- Disponibile a richiesta e con quantità minima in ottone giallo
- Disponibile a richiesta con o-ring in Viton



Prodotti conformi al regolamento CE 1907/2006

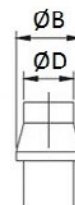


Prodotti conformi alla direttiva EU 2015/863

DIAMETRO RESCA

RACCORDI PORTAGOMMA IN OTTONE

ØD (mm)	Ø4,5	Ø6	Ø7	Ø8	Ø9	Ø10	Ø12	Ø14	Ø17	Ø18	Ø19	Ø21	Ø25	Ø27
ØB (mm)	4,8	6,3	7,3	8,3	9,3	10,3	12,3	14,3	17,3	18,3	19,3	21,3	25,3	27,3



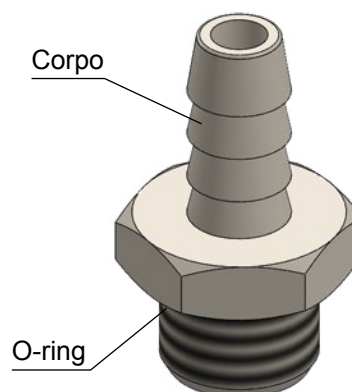
COPPIA DI SERRAGGIO CONICA GAS BSPT ISO 7

FILETTO	1/8"	1/4"	3/8"	1/2"	3/4"	1"
Nm	8	12	14	16	18	20

COPPIA DI SERRAGGIO CILINDRICA GAS BSPP ISO 228 & METRICA ISO 262

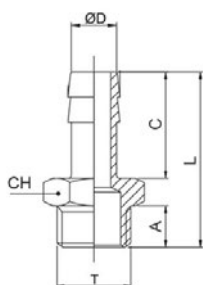
FILETTO	M5x0,8	1/8"	1/4"	3/8"	1/2"	3/4"
Nm	0,8	5	8	10	12	14

DETTAGLI COSTRUTTIVI



1165

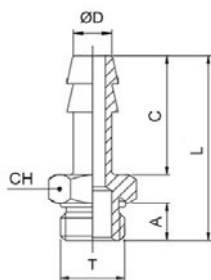
Portagomma diritto maschio cilindrico BSPP & metrico



CODICE	T	ØD	A	C	L	CH	g
1165TRM545	M5x0,8	4,5	4,0	15,0	22,5	8	6,0
1165TR186	G 1/8"	6	6,0	19,0	29,5	12	8,0
1165TR146	G 1/4"	6	8,0	19,0	32,0	14	12,0
1165TR187	G 1/8"	7	6,0	19,0	29,5	12	8,0
1165TR147	G 1/4"	7	8,0	19,0	32,0	14	14,0
1165TR188	G 1/8"	8	6,0	19,0	29,5	12	8,0
1165TR148	G 1/4"	8	8,0	19,0	32,0	14	14,0
1165TR388	G 3/8"	8	9,0	19,0	33,0	19	22,0
1165TR189	G 1/8"	9	6,0	19,0	29,5	12	10,0
1165TR149	G 1/4"	9	8,0	19,0	32,0	14	14,0
1165TR389	G 3/8"	9	9,0	19,0	33,0	19	22,0
1165TR1810	G 1/8"	10	6,0	20,0	30,5	12	10,0
1165TR1410	G 1/4"	10	8,0	20,0	33,0	14	14,0
1165TR3810	G 3/8"	10	9,0	20,0	34,0	19	23,0
1165TR1412	G 1/4"	12	8,0	20,0	33,0	14	16,0
1165TR3812	G 3/8"	12	9,0	20,0	34,0	19	24,0
1165TR1212	G 1/2"	12	10,0	20,0	35,5	22	32,0
1165TR3814	G 3/8"	14	9,0	22,0	36,0	19	26,0
1165TR1214	G 1/2"	14	10,0	22,0	37,5	22	34,0
1165TR3817	G 3/8"	17	9,0	24,0	38,0	19	30,0
1165TR1217	G 1/2"	17	10,0	24,0	39,5	22	38,0
1165TR3418	G 3/4"	18	11,0	24,0	41,5	30	58,0
1165TR1220	G 1/2"	20	10,0	24,0	39,5	22	40,0
1165TR3420	G 3/4"	20	11,0	24,0	41,5	30	60,0

1167

Portagomma diritto maschio cilindrico BSPP & metrico con O-ring

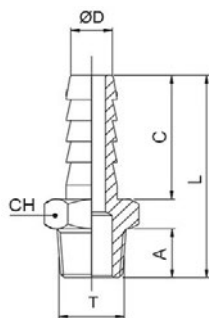


CODICE	T	ØD	A	C	L	CH	g
1167TRM545	M5x0,8	4,5	4,5	15,0	23,0	8	6,0
1167TR186	G 1/8"	6	6,5	19,0	30,0	14	10,0
1167TR146	G 1/4"	6	8,0	19,0	32,0	17	16,0
1167TR386	G 3/8"	6	9,0	19,0	33,0	20	-
1167TR187	G 1/8"	7	6,5	19,0	30,0	14	10,0
1167TR147	G 1/4"	7	8,0	19,0	32,0	17	16,0
1167TR188	G 1/8"	8	6,5	19,0	30,0	14	12,0
1167TR148	G 1/4"	8	8,0	19,0	32,0	17	17,0
1167TR388	G 3/8"	8	9,0	19,0	33,0	20	-
1167TR189	G 1/8"	9	6,5	19,0	30,0	14	14,0
1167TR149	G 1/4"	9	8,0	19,0	32,0	17	16,0
1167TR389	G 3/8"	9	9,0	19,0	33,0	20	22,0
1167TR1810	G 1/8"	10	6,5	19,0	30,0	14	-
1167TR1410	G 1/4"	10	8,0	19,0	32,0	17	-
1167TR1412	G 1/4"	12	8,0	20,0	33,0	17	18,0
1167TR3812	G 3/8"	12	9,0	20,0	34,0	20	24,0
1167TR1212	G 1/2"	12	10,0	20,0	35,5	24	35,0
1167TR3817	G 3/8"	17	9,0	24,0	38,0	20	30,0
1167TR1217	G 1/2"	17	10,0	24,0	39,5	24	42,0



1169

Portagomma diritto maschio conico BSPT



CODICE	T	ØD	A	C	L	CH	g
1169TR186	R 1/8"	6	8,0	19,0	31,5	12	8,0
1169TR146	R 1/4"	6	11,0	19,0	35,0	14	14,0
1169TR187	R 1/8"	7	8,0	19,0	31,5	12	10,0
1169TR147	R 1/4"	7	11,0	19,0	35,0	14	14,0
1169TR188	R 1/8"	8	8,0	19,0	31,5	12	10,0
1169TR148	R 1/4"	8	11,0	19,0	35,0	14	14,0
1169TR189	R 1/8"	9	8,0	19,0	31,5	12	12,0
1169TR149	R 1/4"	9	11,0	19,0	35,0	14	16,0
1169TR389	R 3/8"	9	11,5	19,0	35,5	17	20,0
1169TR129	R 1/2"	9	14,0	19,0	38,5	22	32,0
1169TR1810	R 1/8"	10	8,0	20,0	32,5	12	10,0
1169TR1410	R 1/4"	10	11,0	20,0	36,0	14	16,0
1169TR3810	R 3/8"	10	11,5	20,0	36,5	17	22,0
1169TR1210	R 1/2"	10	14,0	20,0	39,5	22	32,0
1169TR1412	R 1/4"	12	11,0	20,0	36,0	14	16,0
1169TR3812	R 3/8"	12	11,5	20,0	36,5	17	22,0
1169TR1212	R 1/2"	12	14,0	20,0	39,5	22	34,0
1169TR3814	R 3/8"	14	11,5	22,0	38,5	17	24,0
1169TR1214	R 1/2"	14	14,0	22,0	41,5	22	36,0
1169TR3816	R 3/8"	16	11,5	22,0	38,5	17	26,0
1169TR1216	R 1/2"	16	14,0	22,0	41,5	22	36,0
1169TR3416	R 3/4"	16	16,5	22,0	45,0	27	58,0
1169TR3817	R 3/8"	17	11,5	24,0	40,5	18	30,0
1169TR1217	R 1/2"	17	14,0	24,0	43,5	22	40,0
1169TR3818	R 3/8"	18	11,5	24,0	40,5	19	34,0
1169TR1218	R 1/2"	18	14,0	24,0	43,5	22	44,0
1169TR3418	R 3/4"	18	16,5	24,0	47,0	27	62,0
1169TR3820	R 3/8"	20	11,5	24,0	41,0	22	40,0
1169TR1220	R 1/2"	20	14,0	24,0	43,5	22	42,0
1169TR3420	R 3/4"	20	16,5	24,0	46,5	27	60,0
1169TR1221	R 1/2"	21	14,0	34,0	53,5	22	-
1169TR3421	R 3/4"	21	16,5	34,0	56,5	27	-
1169TR121	R 1"	21	19,0	34,0	60,0	34	-
1169TR3425	R 3/4"	25	16,5	30,0	53,0	27	76,0
1169TR125	R 1"	25	19,0	30,0	56,0	34	114,0
1169TR3427	R 3/4"	27	16,5	38,0	60,5	32	-
1169TR127	R 1"	27	19,0	38,0	64,0	34	-



1170

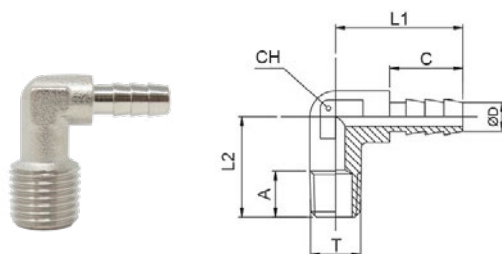
Portagomma diritto femmina cilindrico BSPP



CODICE	T	ØD	A	C	L	CH	g
1170TR186	G 1/8"	6	8,0	19,0	28,5	12	7,5
1170TR146	G 1/4"	6	11,0	19,0	31,5	15	-
1170TR187	G 1/8"	7	8,0	19,0	28,5	12	9,0
1170TR147	G 1/4"	7	11,0	19,0	31,5	15	21,0
1170TR188	G 1/8"	8	8,0	19,0	28,5	12	8,0
1170TR148	G 1/4"	8	11,0	19,0	31,5	15	19,0
1170TR189	G 1/8"	9	8,0	19,0	28,5	12	9,0
1170TR149	G 1/4"	9	11,0	19,0	31,5	15	20,0
1170TR389	G 3/8"	9	11,5	19,0	32,0	19	-
1170TR1810	G 1/8"	10	8,0	20,0	29,5	12	-
1170TR1410	G 1/4"	10	11,0	20,0	32,5	15	12,5
1170TR3810	G 3/8"	10	11,5	20,0	33,0	19	17,0
1170TR1210	G 1/2"	10	14,0	20,0	36,0	24	-
1170TR1412	G 1/4"	12	11,0	20,0	32,5	15	22,0
1170TR3812	G 3/8"	12	11,5	20,0	33,0	19	18,0
1170TR1212	G 1/2"	12	14,0	20,0	36,0	24	33,0
1170TR3814	G 3/8"	14	11,5	22,0	35,0	19	-
1170TR1214	G 1/2"	14	14,0	22,0	38,0	24	35,5
1170TR3816	G 3/8"	16	11,5	22,0	35,0	19	-
1170TR1216	G 1/2"	16	14,0	22,0	38,0	24	-
1170TR3817	G 3/8"	17	11,5	24,0	37,0	19	-
1170TR1217	G 1/2"	17	14,0	24,0	40,0	24	-
1170TR1218	G 1/2"	18	14,0	24,0	40,0	24	-
1170TR3418	G 3/4"	18	15,0	24,0	41,5	29	-
1170TR3420	G 3/4"	20	15,0	24,0	41,5	29	-
1170TR3425	G 3/4"	25	15,0	30,0	47,5	29	-

1171

Portagomma a gomito conico BSPT

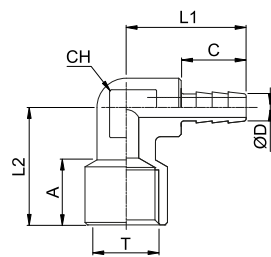


CODICE	T	ØD	A	C	L1	L2	CH	g
1171TR186185	R 1/8"	6	8,0	14,0	22,5	18,5	8	10,0
1171TR18623	R 1/8"	6	10,0	14,0	22,5	23,0	8	12,0
1171TR14623	R 1/4"	6	11,0	14,0	23,0	23,0	9	16,0
1171TR187185	R 1/8"	7	8,0	14,0	22,5	18,5	8	10,0
1171TR18723	R 1/8"	7	10,0	14,0	22,5	23,0	8	10,0
1171TR14723	R 1/4"	7	11,0	14,0	23,0	23,0	9	16,0
1171TR18819	R 1/8"	8	10,0	14,0	22,5	19,0	10	-



1174

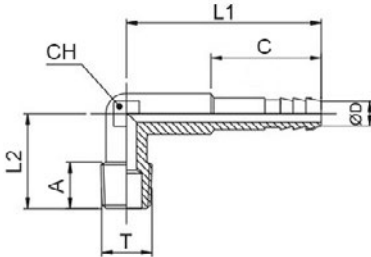
Portagomma a gomito femmina cilindrico BSPP



CODICE	T	ØD	A	C	L1	L2	CH	g
1174TR186	G 1/8"	6	8,0	13,0	22,0	22,0	9	-
1174TR146	G 1/4"	6	11,0	13,0	24,0	23,5	13	-
1174TR187	G 1/8"	7	8,0	13,0	24,0	22,0	9	-
1174TR147	G 1/4"	7	11,0	13,0	24,0	23,5	13	-

1172

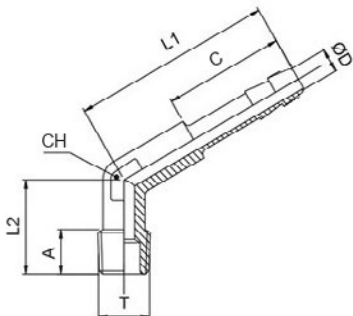
Portagomma a gomito serie lunga conico BSPT



CODICE	T	ØD	A	C	L1	L2	CH	g
1172TR186325	R 1/8"	6	10,0	14,0	32,5	22,0	9	18,0
1172TR18638	R 1/8"	6	8,0	22,0	38,0	18,5	8	14,0
1172TR146325	R 1/4"	6	11,0	14,0	32,5	23,0	9	20,0
1172TR187325	R 1/8"	7	11,0	14,0	32,5	22,0	9	16,0
1172TR18738	R 1/8"	7	8,0	22,0	38,0	18,5	8	14,0
1172TR147325	R 1/4"	7	11,0	14,0	32,5	23,0	9	20,0

1173

Portagomma a gomito 120° serie lunga conico BSPT



CODICE	T	ØD	A	C	L1	L2	CH	g
1173TR186	R 1/8"	6	8,0	23,0	38,0	18,5	8	14,0
1173TR187	R 1/8"	7	8,0	23,0	38,0	18,5	8	12,0



